

CIRKUT

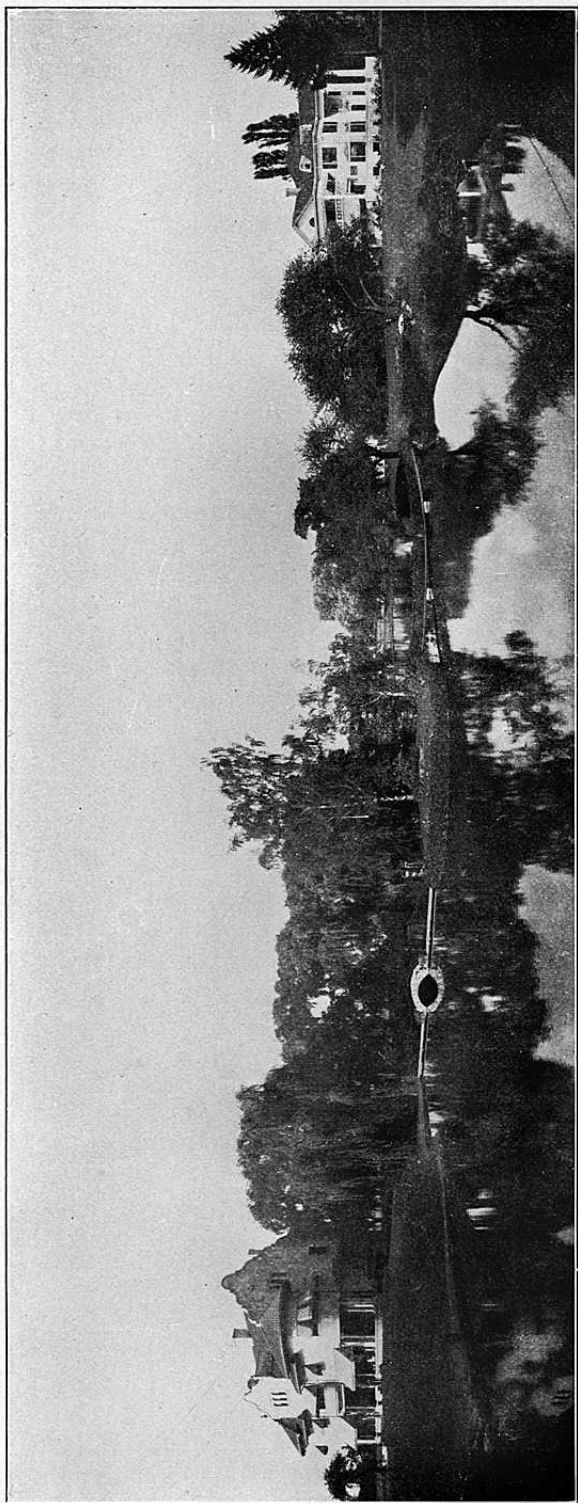


Century Camera Company
Rochester, N.Y.

Cirkut Apparatus



Century Camera Division
Eastman Kodak Company
ROCHESTER, NEW YORK



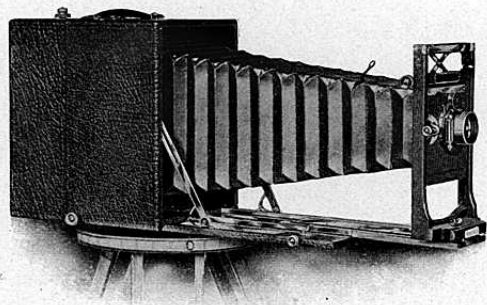
Reduced from Cirkut Negative 30' long

Willow Pond

Cirkut Photography

U P to a few years ago Panoramic Photography represented merely a large and undeveloped field of work. We say "undeveloped" because there was no apparatus with which to develop it. The coming of the Cirkut provided the apparatus, and with it has been opened up an immense field of usefulness in photography, which is well nigh limitless. The Cirkut has shown not alone its utility as a Panoramic Camera, but it has shown also that there are certain other kinds of photography which can be better done with a Cirkut than with any other apparatus. The Cirkut occupies, therefore, a place in photography exclusively its own. Nor can too much emphasis be laid upon its exclusive features. There is no photographic apparatus that will make a negative true as to perspective, free from the distortion always in evidence in the earlier attempts at Panoramic Photography, excepting the Cirkut. Neither is there a camera which will make a negative of any desired length up to 12 feet, as may be done with the No. 10 Cirkut or 18 feet, as may be done with the No. 16 Cirkut, and which is at the same time adapted for any intermediate lengths—all on Eastman Daylight-loading Roll Film. There is another exceedingly noteworthy feature that should not be overlooked, and that is the availability of the Cirkut for much of the work which is now done with the ordinary view camera, with this difference:—with the Cirkut the size of the picture may be made to conform with the ideas of the photographer, while with an 8 x 10 camera only 8 x 10 photographs may be made. With the Cirkut the more artistic proportions may be secured; 8 x 11, 8 x 12, 8 x 14, or any size that the photographer himself may determine. There is also the advantage of being able to use Daylight-loading Film— a decided advantage, of course, over dry plates and plate holders.

What the Cirkut Camera means from the purely commercial — profit-producing — standpoint, must be only too readily apparent. To appreciate what a mine of opportunities the Cirkut will develop, it is necessary only to consider the wide range of work that can be done with it: Country estates, farms, railroad construction work, large groups, games and athletic events, manufacturing plants, scenery of all kinds, etc., etc. The possibilities are quite boundless.



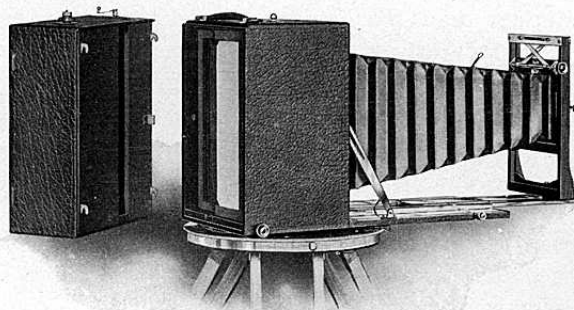
The Cirkut Camera

The construction of the Cirkut reverses the old principles of Panoramic Camera construction. Instead of the swinging lens and stationary plate or film, the Cirkut employs a mechanism whereby the film unwinds past a slot, while the entire camera, by the same mechanism, revolves on the tripod. A pressure on the release starts the exposure, another stops it, thus negatives of any length may be made.

Another radical difference in the Cirkut is the departure from the use of short focus lenses. It is, of course, necessary to get away from the short focus lens to eliminate distortion and to secure true definition and perspective. This is made possible by the construction of a camera which allows of a Convertible Anastigmat Lens thus affording the use of three focal lengths, and thus meeting almost every photographic requirement. With the Cirkut it is also possible to focus accurately before making the exposure.

Size of Picture

Cirkut Cameras are made in two sizes: No. 10 and No. 16, the former for film either 6, 8 or 10 inches wide; the latter for 10, 12, 14 or 16 inch widths. The length of the negative is determined entirely by the focal length of the lens and the angle of view desired. By using the longest focal capacity of the lens, the longest negative is secured and at the same time the largest image or magnification.



Cirkut Showing Film Magazine Detached

Exposures

The exposure is started by a pressure of the release and stopped in the same way. Before the exposure is made, however, the scale on the tripod top will show approximately how long a negative any given view will make, so that the operator knows just where to stop the camera to close the exposure. There is also an indicator on the camera which records the total amount of film used and the quantity still remaining unexposed. There is likewise a device by which the film is perforated after each exposure. The speed of the exposure is determined by a fan which regulates the motor. Fans of various sizes are supplied and it is but the matter of a second to change from one size to another, thus increasing or decreasing the time of the exposure, as may be desired.

For the Cirkut we recommend altogether the Convertible Anastigmat Lens, and our recommendations are the result of much careful in-

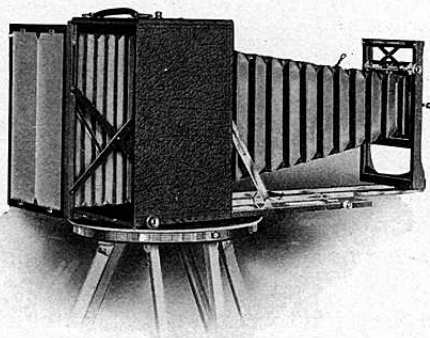
Lens

vestigation based on the knowledge that for the successful operation of the Cirkut too much care cannot be exercised in the selection of a lens.

By a Convertible lens is meant one which permits of the use of the front and back combinations together as a doublet, and which also allows of either the front or back combinations being used alone. The front combination is of a longer focus than the back, and as the back is longer than the doublet, the choice of three separate lenses of varying focal lengths is given. The longer focal length gives the greatest magnification and thus shows objects on the picture much larger than with the shorter focus lens. The use of the long focus lens is therefore a very decided advantage when it is necessary to photograph from a distance, as this can be done without sacrificing the size of the picture.

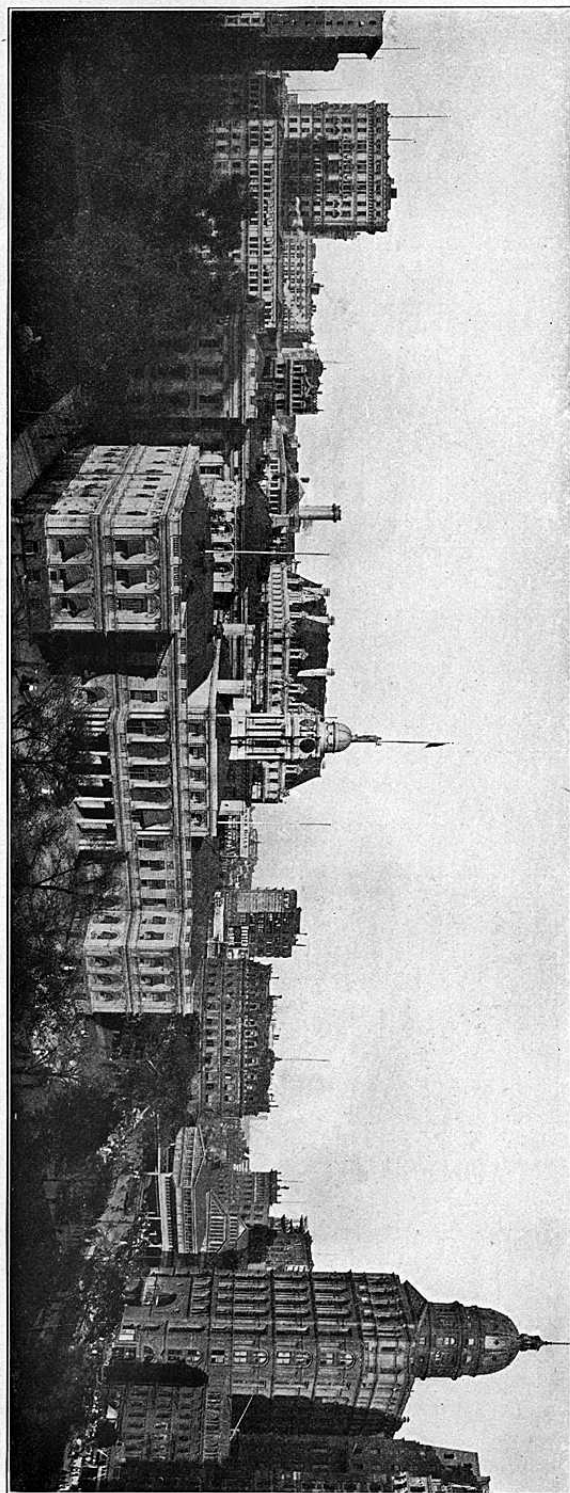
Nearly any lens of suitable focal length can be fitted to the Cirkut, but we recommend the purchase of the equipment complete as listed in this catalog. This will insure the very best results.

The lens supplied with the No. 10 Cirkut has an equivalent focus of $10\frac{7}{8}$ inches, the front lens when used alone 24 inches, the back lens 18 inches. The equivalent focus of the lens on the No. 16 is 15 inches, the front lens alone 36 inches, the back lens 24 inches.



Cirkut Adjusted for Focusing on Ground Glass

City Hall, New York



Reduced from Cirkut Negative 34" long

The Camera

The Cirkut Camera is provided with a focusing screen, allowing the operator to focus accurately and enabling him to see the picture on the ground glass actual size, not alone in width but also in length.

The Cirkut has a firm Rising and Falling Front adjustment. By means of a milled head the front may be lowered or raised and locked in position automatically.

Eastman Daylight-loading Cartridge Film only is used.

SPECIFICATIONS

	No. 10	No. 16
Dimensions of Camera	9 x 12 x 12	11½ x 14½ x 18
Length of Bellows	27"	39"

PRICE

Including Sole Leather Carrying Case for Camera and extra case for Tripod.

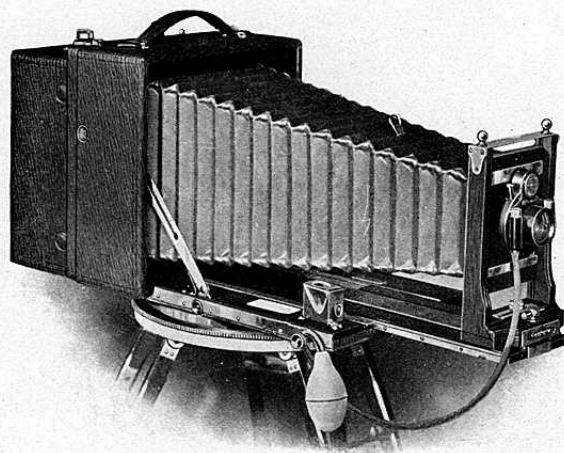
Cirkut Camera fitted with Turner-Reich

Convertible Anastigmat Lens, Series

II, and No. 4 Century Shutter . . . \$290.00 \$425.00

Cirkut Camera without Lens or Shutter 240.00 350.00

The Cirkut Panoramic Outfit



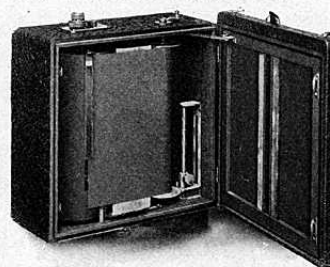
The wonderful success of the original No. 10 and No. 16 Cirkut Cameras has led to the introduction of the smaller No. 6 and No. 8 Outfits,

the former adapted for film 6½ inches wide and the latter for 8-inch widths.

The Cirkut Panoramic Outfit is in itself a most complete affair, being made up of a Camera which can be used in the ordinary manner for plates when desired, and a Panoramic Attachment which is easily and quickly attached to the Camera, thus converting it into a Panoramic Outfit. The Attachment in itself is much like an ordinary Cartridge-Roll Holder, in that it is made to use Eastman Daylight-loading Cartridge Film. In addition it contains the mechanism which, when the outfit is in operation, unwinds the film past a slot on a roller, and in so doing exposes it, and at the same time revolves the camera about on an axis, a special tripod and top being furnished. A pressure on the release is all that is necessary to start the motor—another pressure stops it—thus negatives of any desired length up to 6 feet, with the No. 6 and 8 feet with the No. 8, may be made. A complete circle of 360° may be photographed if desired, although, owing to the varying intensity of illumination and direction of light, it is not advisable to attempt 360° negatives unless under exceptionally favorable conditions.

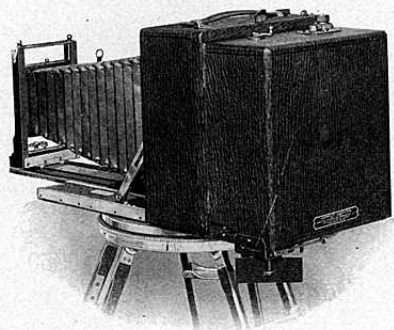
There is an indicator on the top of the film holder showing the exact quantity of film exposed and that remaining unexposed. By another very ingenious arrangement one is enabled to determine before exposure is made, how long a photograph the view decided upon will be.

As with the Cirkut Camera, there is one very important fact relating to Cirkut Outfits that must not be overlooked, and that is their general adaptability. They are not alone Panoramic Outfits.



Cirkut Attachment

They are more. With them one is not limited as to size of the photograph to be made. The camera is loaded with a roll of film 3 feet or 6 feet long, as may be desired, and a succession of exposures, one after the other, of whatever length the operator may determine, made by merely starting and stopping the motor until the roll of film has all been exposed. Then additional rolls may be loaded in broad daylight. With the No. 6, photographs $6\frac{1}{2}$ inches wide and any length up to 6 feet may be made, and with the No. 8, 8 inches wide and any length up to 8 feet, all on Eastman Daylight-loading



Cirkut Attachment Fitted to 5 x 7 Century Camera

Film. Compare this operation with that of the operator who goes out with the conventional $6\frac{1}{2} \times 8\frac{1}{2}$ or 8×10 view camera, and the necessary quota of glass plate and other paraphernalia, and then the conventional $6\frac{1}{2} \times 8\frac{1}{2}$ or 8×10 photographs only can be secured.

Eastman Daylight-loading Film only is supplied for all Cirkut Apparatus.

In addition to the Panoramic Outfit, either Cirkut No. 6 or No. 8 provides an equipment which permits of its use as a regular hand camera for plates when so desired, and while the camera is adapted for Panoramic work, by removing the Attachment a revolving ground glass back is provided which may be easily fitted, thus converting the outfit into a revolving back plate camera. With the No. 6, the camera is a 5×7 , the No. 8, $6\frac{1}{2} \times 8\frac{1}{2}$.

The camera has a double-section brass-bound telescope bed, swing-back and bed rack and pinion movements, extra bellows length, and is in every way up to the Century standard.

The lens regularly supplied is the Centar Series II, with Century No. 1 Automatic Shutter.

A double plate holder, a Crown Tripod, (the best tripod made) complete the outfit. There is nothing in the entire field of photographic apparatus which for completeness is in any way comparable with the Cirkut Panoramic Outfit. *Cirkut Outfits No. 6 and No. 8 will be sold complete only.*

SPECIFICATIONS

	No. 6	No. 8
Width of Photograph	$6\frac{1}{2}$ "	8"
Dimensions of Camera	$8\frac{7}{8} \times 4\frac{1}{8} \times 8\frac{1}{2}$	$10\frac{5}{8} \times 4\frac{3}{4} \times 10\frac{1}{2}$
Weight of Camera	5 $\frac{3}{4}$ lbs.	8 $\frac{1}{2}$ lbs.
Dimensions of Camera with Attachment	$8\frac{7}{8} \times 8 \times 8\frac{1}{2}$	$10\frac{5}{8} \times 8\frac{1}{4} \times 10\frac{1}{2}$
Weight of Camera with Attachment	9 lbs.	14 lbs.
Length of Bellows	17 inches	21 inches

PRICES

Cirkut Panoramic Outfit including Century Camera, Series II Centar Lens, No. 1 Automatic Shutter and Panoramic Attachment, also Removable Revolving Back and Double Plate Holder for Camera, Tripod and Carrying Cases to hold complete equipment. No. 6 \$112.50, No. 8 \$175.00.

No. 6 Cirkut Outfit with B. & L. Zeiss-Protar Series VIIa, No. 9.....\$196.00
No. 8 Cirkut Outfit with B. & L. Zeiss-Protar Series VIIa, No. 12.....\$283.00

Cirkut Film

Only Eastman Film is supplied for the Cirkut Camera. This film is furnished in Daylight-loading Cartridges.

Width—Inches	Length—Feet	Price -Roll
6	10	\$ 2.40
6	20	4.80
$6\frac{1}{2}$	3	.80
$6\frac{1}{2}$	6	1.60
8	4	1.30
8	8	2.60
8	10	3.20
8	20	6.40
10	10	4.00
10	20	8.00
12	10	4.80
12	20	9.60
16	10	6.40
16	20	12.80

Cirkut Printing Frames

Cirkut Printing Frames are substantially made and are supplied in the following sizes:

For Negatives		Price
8 inches x 4 feet	.	\$ 7.50
8 " x 6 "	.	10.00
10 " x 4 "	.	8.00
10 " x 6 "	.	12.00
16 " x 6 "	.	20.00
16 " x 10 "	.	25.00

Tripods

Regular Combination Cirkut Tripod for No. 10	
Camera, length 4 ft. 8 in., legs only	\$ 6.00
Regular Combination Cirkut Tripod for No. 16	
Camera, length 5 ft., legs only	7.50
Special Combination Cirkut Tripod for No. 10	
Camera, length 12 ft., legs only	15.00

Developing and Printing

To those who do not choose to do their own developing or printing we are prepared to offer the advantages of most unexcelled facilities for doing any of this work. Film sent to us for development or printing should be carefully packed and plainly marked with sender's name.

Prices of Developing

Length of Negative	6 in. wide	6½ in. wide	8 in. wide	10 in. wide	16 in. wide
24 in.	\$.40	\$.40	\$.50	\$.60	\$1.00
30 "	.45	.50	.60	.75	1.20
36 "	.55	.60	.75	.90	1.50
42 "	.65	.70	.85	1.05	1.70
48 "	.75	.80	1.00	1.20	2.00
54 "	.85	.90	1.10	1.35	2.20
60 "	.90	1.00	1.20	1.50	2.40
66 "	1.00	1.10	1.35	1.65	2.70
72 "	1.10	1.20	1.45	1.80	2.90

Larger sizes at proportionate prices.

Prices of Printing

Length of Print	6 in. wide	6½ in. wide	8 in. wide	10 in. wide	16 in. wide
24 in.	\$.85	\$.95	\$1.15	\$1.40	\$2.30
30 "	1.05	1.15	1.40	1.75	2.80
36 "	1.30	1.40	1.70	2.10	3.40
42 "	1.50	1.60	2.00	2.45	4.00
48 "	1.70	1.85	2.25	2.80	4.50
54 "	1.90	2.05	2.55	3.15	5.10
60 "	2.10	2.25	2.80	3.50	5.60
66 "	2.35	2.50	3.10	3.85	6.20
72 "	2.55	2.75	3.40	4.20	6.80

Larger sizes at proportionate prices.