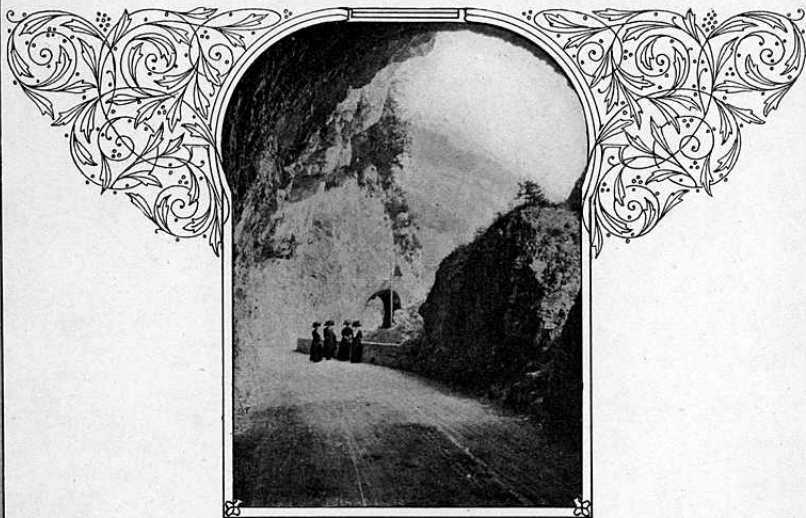


# CENTURY CAMERAS

1910

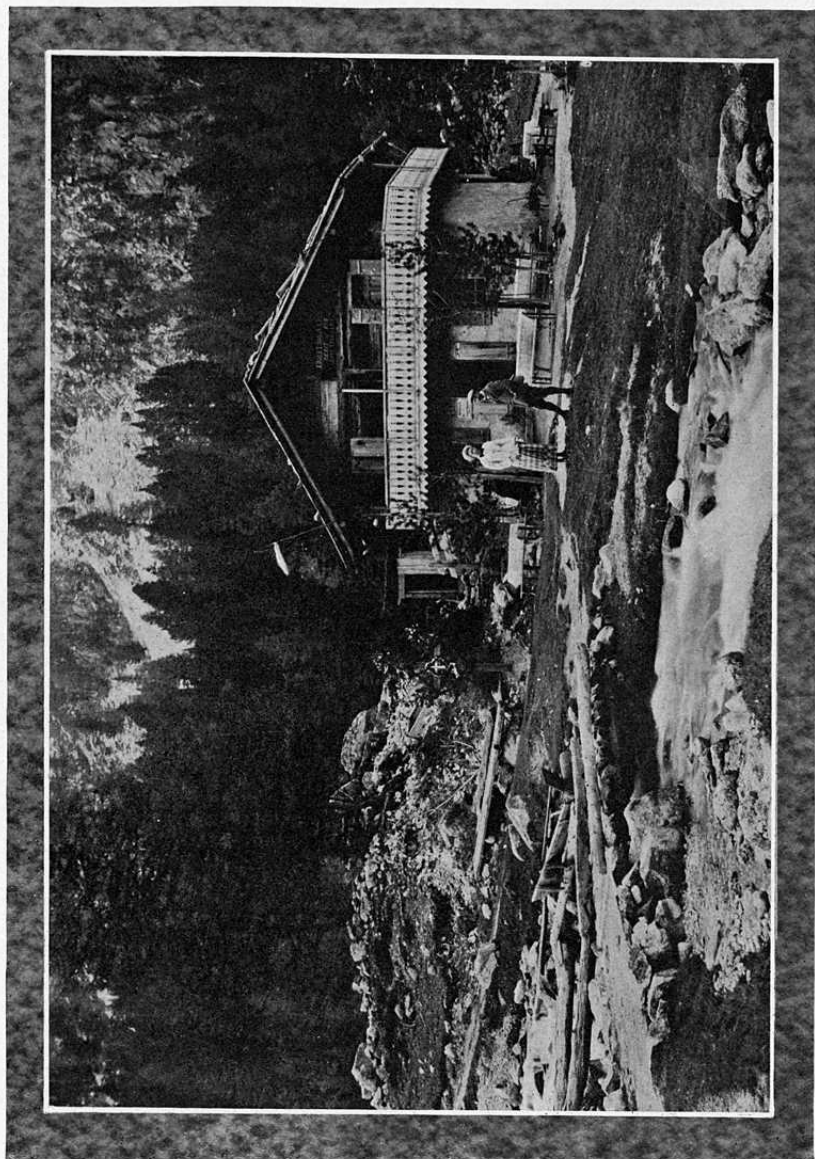
The Gloeckner & Newby Co.  
Kodaks  
Films and  
Photo Supplies  
PRINTING AND DEVELOPING.  
171 BROADWAY,  
NEW YORK.  
ENT. 5 CORTLANDT  
STREET.

CENTURY

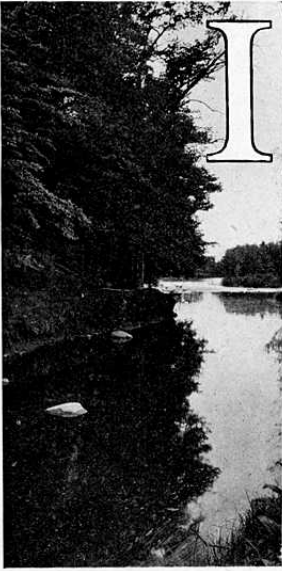


CAMERAS  
1910

Century Camera Division  
Eastman Kodak Company  
Rochester New York



## Century Supremacy



**I**N constructing the Century Camera, we have never lost sight of the fact that the primary purpose of a camera is to take pictures. We have not endeavored to reduce the size of the camera to an extent that will interfere with its accurate operation, nor have we tried to lower the cost by sacrificing any feature or adjustment that would help in making good negatives. In the Century Camera we have embodied all the adjustments necessary for the best photography, in the most compact form consistent with rigid and substantial construction. Our long experience in the manufacture of high grade photographic instruments makes us particularly well qualified to supply

a camera that will give the best possible results quickly, easily and with the greatest accuracy.

Aside from the fact that the Century is the most highly efficient camera, it is also the most beautifully finished. The body of the Century is made of the finest kiln-dried mahogany, carefully selected for the richest grain effect, and finished in such a manner that the rich mahogany color is preserved. The most minute details of construction are given painstaking care, and by the employment of the most expert camera makers, the use of raw material perfect in every respect, the most modern machinery, we supply in the Century Camera the nearest approach to perfection.

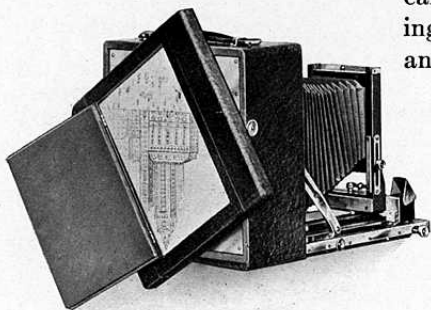


# CENTURY

Century Cameras embody the good points which many years of camera building have developed and suggested. There are also new features and exclusive ideas covered by letters patent, all of which make the entire Century line thoroughly distinctive. The Revolving Back enables the photographer to decide instantly, just how he wishes to make the picture, as the reflected image can be viewed with the ground glass focusing screen in either a vertical or horizontal position, without detaching the

**Century  
Revolving Back**

back. The plate is changed from a horizontal to a vertical position by simply pressing a spring catch at the side and revolving the back; the position of the camera, or any part of it, is not disturbed.

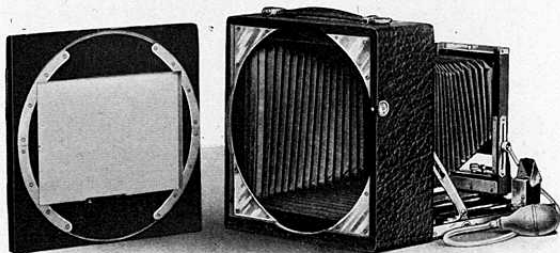


Showing Revolving Back turned half-way to Vertical Position

Photographic plates are usually longer one way than the other, and it has been the general custom to build cameras so that the long dimension of the plate is horizontal.

When photographing high buildings, or when making portraits, or in fact any perpendicular subject, the length of the picture should be up and down, the short side acting as a base.

To make an upright picture with an ordinary camera, by which we mean one without reversible back, the *entire instrument* must be turned over on its side, and in this position the

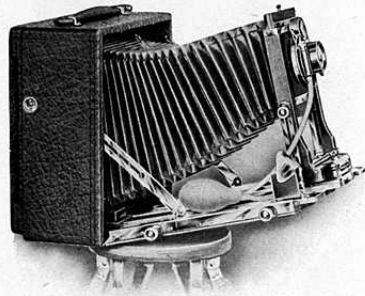


Revolving Back detached from Camera, showing Construction

various adjustments are not accessible nor as readily manipulated. Even with the improved form of hand camera, made with a reversible back, it is necessary, when changing the plate from a horizontal to a vertical position, to *detach the entire back*, either by releasing springs or pressing buttons, then turn the back over and again adjust it to camera in the reverse position.

**The Century  
Swing Back**

The purpose of a Swing Back or Swing Bed is to keep the plate perpendicular, or parallel with the object photographed. To include the top of a tall building or church spire, or to secure more of a subject than can be obtained with the camera when level, it is often necessary to tilt it. Under such conditions, with a camera not having a Swing Back or Swing Bed, the lines in the photograph will converge at the top, because the plate is at an angle with the subject instead of parallel to it. If the back of the camera is made to "swing" independently, then, even though the camera is not level, the plate can be placed parallel with the subject, and straight lines secured.



Century Grand Sr. showing Swing Bed

In photographing groups the Swing Back may be employed to good advantage. A group is usually so arranged that the front row is quite close to the lens, while the back row may be a considerable distance away; by slightly tilting the swing back all of the subjects may be brought into the focal plane, giving a sharp image without using a small diaphragm or stop.

To manipulate an ordinary Swing Back, it is necessary to adjust the tripod legs, in order to keep the plate perpendicular. But this is not always convenient—in fact, impossible under certain conditions. We have perfected an adjustment which avoids the necessity of any change in the position of the tripod, and this feature is the Century Swing Bed. It is easier to manipulate than the old style Swing Back, and when the tripod top has been leveled and the camera attached, the plate always remains perpendicular, whether the Swing Bed is used or not.

All Century swings having rack and pinion movement are fitted with our patent Swing Back Lock, which holds the back

absolutely rigid in any desired position by simply pushing the milled head in flush with bed—another exclusive Century idea.

As a rule, landscape pictures are made with a small diaphragm in the lens for the purpose of bringing into sharp focus both objects in the foreground as well as distant points. Under certain conditions the use of a small diaphragm would require an exposure too long to prevent movement of the objects, swaying trees, etc. As there are usually no straight lines in a landscape, by tilting the Swing Back, both near and distant objects can be brought into focus while using a large stop.

A Swing Bed is not necessary for hand work pure and simple, but this feature as applied to Century Cameras does not increase either the weight or bulk. It is an adjustment that will be found very convenient when making tripod exposures, and under certain conditions it is practically indispensable.

### The Century Rising and Falling Front

The lens when occupying its normal position on a camera is exactly in the center of the plate. The purpose of a Rising and Falling Front is to shift the lens above or below the center, and thus vary the relative amount of sky and foreground, on which depends very largely the artistic effect of the picture. Moving the lens upward will give more sky, and when dropped below the center the amount of foreground is increased.

All Century Cameras have Rising and Falling Front, and the maximum amount of movement is given. In the Century Model 43, the adjustment is controlled by a milled head. The Century Petite Grand, Model 46 and Grand Senior Cameras have, however, a new Century feature—whereby the front is raised and lowered by a small knob on the top of the left standard. Only one movement is necessary to raise or lower and secure the lens in any desired position without the usual binding screw.

The Century Grand Senior, also the Model 46, Petite No. 3 and Petite Grand have the front arranged to move horizontally as well as vertically. This is called a Double Sliding Front. The horizontal movement permits adjusting the lens from side to side, thus changing the angle of view, or, if the camera is not made with a reversing back, this movement



Double Sliding Front  
With Adjustment for Raising  
and Lowering

takes the place of a regular Rising and Falling Front when the instrument is reversed for vertical pictures.

**The Front  
Automatic Clamp**

In place of the old style clamp hook for holding the front in position, after focusing, all Century Cameras are fitted with our patent Automatic Clamp—a novel device that automatically clamps and securely holds at any point on the bed the front with lens and shutter. There is absolutely no chance of the front slipping after once adjusting the focus, as the “shoe” grips the brass bed plate its entire length.



Century Automatic Clamp

When the T-shaped bar at the base of front is straight across the bed, or parallel with the name plate, the Clamp is set, and the front cannot move. To release the Clamp it is only necessary to turn the bar a trifle either to the right or left, when the front with lens can readily be moved forward or back. The instant the bar is released it clamps the front automatically, and clamps it securely—no slipping or sliding to throw the picture out of focus. This clamp is the most effective device ever invented for the purpose. It is another of our exclusive and very practical features, adding much to the efficiency of Century

**The Century  
Focusing Screen**

Cameras. The method of fitting the ground glass Focusing Screen in Century Cameras is entirely different as it provides for a variation in the thickness of the ground glass. If the original screen is ever broken, it can be replaced without a single tool in ten seconds, actual time, and no matter how thin or thick the glass, it will automatically register and occupy the same plane as the sensitive plate. This feature adds greatly to the accuracy of photography, as the image on the ground glass screen must always lie in the same plane as the sensitive surface of the plate.

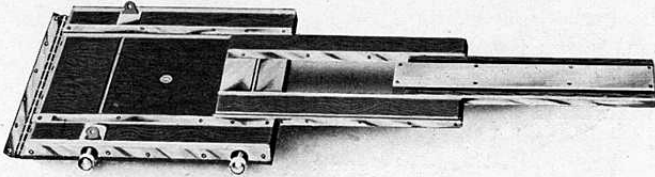
**The Triple Section Bed—  
Operated by a Single Pinion  
—The Century Way**

One of the many important points of superiority in the Century is the absolute rigidity of our extension bed. The increased use of anastigmat lenses working at large apertures, and, therefore, necessarily heavy, has made rigidity a most important feature in camera construction. The Century Triple Extension Beds are marvels of mechanical ingenuity. A single pinion at the side moves each section of the bed forward or back and when pushed in, acts as a lock, holding the bed absolutely firm and



# CENTURY

rigid whether it is fully or only partly racked out. By turning the milled head the section carrying lens and shutter moves first, and when this section is fully extended it locks automatically into the second section, and at the same time begins to carry it forward by means of a continuous rack. Our method of fitting the front section of the bed is entirely new and an original Century idea. It gives an exceptionally easy and

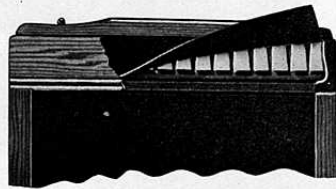


Century Triple Extension Bed

smooth movement, as the same amount of friction exists whether the front section is fully or only partly extended. Special construction of the wood and metal parts makes the bed capable of resisting atmospheric changes to a remarkable degree. Each section is bound with metal to prevent any possibility of lost motion, and brass guides on the top of the bed insure strength and perfect rigidity.

## Century Plate Holders

One of the most important parts of a photographic outfit is the plate holder, as an imperfectly constructed plate holder will frustrate the plans of the most careful photographer. Century Holders are constructed with a specially designed flexible light-valve, which will allow the slide to be inserted at any angle without fogging the



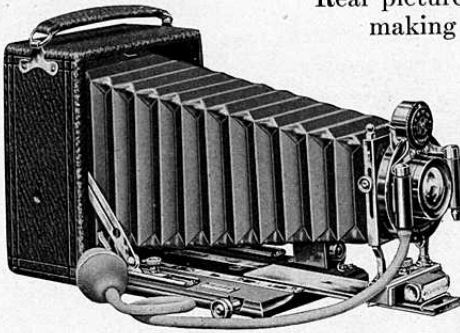
## Century Finders

Century Finders are of a special design, far superior to the ordinary type, as three lenses are employed. In place of simply one lens at the top we use two, and by this combination secure an image which is most brilliant and perfect. For the purpose of cleaning the lenses and mirror, the Century Finder can readily be removed from the brass binding and as easily put back into place—a feature adding much to the efficiency of the finder.

# Petite Century No. 3

**T**HE demand for a camera, compact in form and possessing many of the adjustments of more elaborate instruments, is met with the Petite Century No. 3. For instantaneous and time exposures, for landscapes and interiors, for portraits and groups, for flashlight pictures—for all these and more too, it is admirably adapted.

Real pictures are not the result of making snap shots at random.



To properly compose and arrange the picture it is necessary to see the full size image reflected on the ground glass. This is possible with the Petite Century No. 3, whether using plates or film, and it is a great advantage.

The No. 3 Petite has the automatic front clamp, rack and pinion for delicate focusing, brilliant finder—in fact, every adjustment and advantage necessary to a high grade instrument, and in addition:

- A Rapid Symmetrical Lens.
- A No. 1 Automatic Shutter (for description see page 37).
- A Double Sliding Front.
- A Swing Bed and Swing Back.
- Rack and Pinion for focusing

Never before has so compact a camera been made, embodying the features enumerated above, and at the same time perfectly adapted for glass plates, and Film Pack. The Petite No. 3 will at once appeal to all who desire for general work a camera in the most compact form possible.

**SPECIFICATIONS**

Dimensions . . . . .	$3\frac{1}{4} \times 5\frac{1}{2}$	$4 \times 5$
Length of Bellows . . . . .	$6\frac{1}{2} \times 4\frac{3}{8} \times 2\frac{1}{2}$	$6 \times 2\frac{3}{8} \times 5\frac{1}{8}$
Weight . . . . .	$10\frac{1}{2}''$	$10\frac{1}{2}''$
	$1\frac{3}{4}$ lbs.	29 ozs.

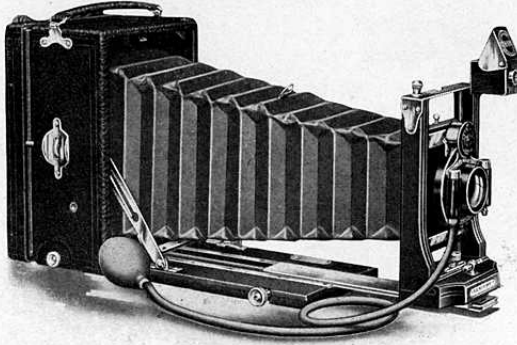
**PRICE**

Including one Double Plate Holder.

Petite Century No. 3 . . . . .	$3\frac{1}{4} \times 5\frac{1}{2}$	$4 \times 5$
Extra Double Plate Holders, each . . . . .	\$25.00	\$25.00
	1.00	1.00

## Century Petite Grand

THE popularity of the  $3\frac{1}{4} \times 5\frac{1}{2}$  or "3-A" size, and numerous requests for a camera making a photograph of these dimensions, possessing all the more important adjustments, have lead to the introduction of the Century Petite Grand. In this camera we have embodied all the features that make up a photographic equipment of



the highest type, and at the same time have not increased the size or weight over many cameras making the same size picture but whose lack of adjustments renders them useless for many photographic purposes.

The Century Petite Grand is built throughout of mahogany—selected and kiln-dried, with all joints dovetailed. The camera is handsomely covered with fine, black special grain cowhide, and has a padded handle for carrying. The metal work is polished and lacquered in a rich gold color. The bellows is made of red leather, lined with rubber cloth, insuring elasticity and rendering it absolutely light-proof.

In addition to the usual Century features, the Century Petite Grand has swing back and side swing, something not obtainable on any other camera of this size, the value of which feature will be instantly apparent to those who have attempted to photograph groups or buildings at close range with fixed back cameras.

The swing back and side swing are made doubly valuable on account of the rising and falling front, both of which adjustments are actuated to permit the greatest possible range of movement.

The rising front is controlled by a small milled knob on top of the left front standard.

Another feature which makes the Century Petite Grand an especially valuable instrument is the large and rigid front—

# CENTURY

large enough to accommodate Anastigmat Lenses working at high speeds, such as the B. & L.-Zeiss Tessar Ic—and rigid enough to prevent vibration when the camera is used with the bellows extended.

The Bellows is of ample length for copying or to allow the use of the back combination of the lens when it is desirable to secure a large image without too closely approaching the subject. The lens supplied on the Century Petite Grand is the Centar Series II, a lens of superior covering power and definition. It is achromatic, rectilinear and so constructed that either the front or back combination may be used alone for distant views, the single lens having double the focus of the combined element. A full description of the Centar Series II will be found on page 33.

Our latest and best Shutter—the No.1 Automatic—is fitted to the Century Petite Grand. Its many attractive features and advantages will be appreciated by both amateur and professional photographers. The Automatic operates for instantaneous, time and bulb exposures. The mechanism is so constructed that in moving to terminate an exposure, it will automatically set itself for the next exposure. There can be no question as to “whether the shutter is set,” as it is always ready for instant use, being released and set by simply pressing the bulb. The diaphragms are marked in accordance with the standard U. S. system. Both lens and shutter are fully described on pages 33 and 37.

To those requiring a camera for general photographic use, as well as making negatives for postcard reproduction or lantern slides, it would be difficult to recommend a better equipment than the Century Petite Grand.

## SPECIFICATIONS

Dimensions . . . . .	$7\frac{3}{8} \times 3\frac{1}{2} \times 5$
Length of Bellows . . . . .	13"
Weight . . . . .	38 ozs.

## PRICE

Including Velvet Lined Sole Leather Carrying Case and one Double Plate Holder

Century Petite Grand, with Centar Lens Series II . . . . .	$3\frac{1}{4} \times 5\frac{1}{2}$	\$ 40.00
With Zeiss Kodak Anastigmat Lens and Compound Shutter . . . . .		77.55
With Zeiss Protar Lens Series VIIa and Compound Shutter . . . . .		117.05
With B. & L.-Zeiss Tessar Lens Series IIb and Compound Shutter . . . . .		86.55
With Zeiss Tessar Ic and Compound Shutter . . . . .		97.55

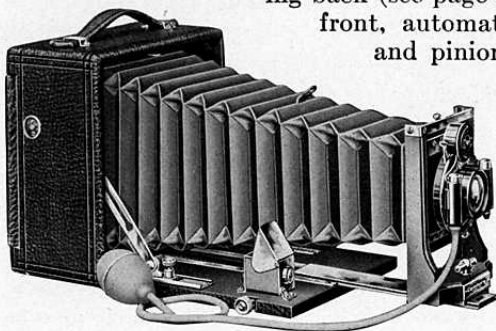
# CENTURY

## Century Camera, Model 43

WITH REVOLVING BACK

**T**HE advanced amateur will find the Century Model 43 a particularly available instrument, as it is adaptable to nearly every variety of photographic work.

Model 43 contains every adjustment and all the meritorious features possessed by the less expensive types, including revolving back (see page 4), rising and falling front, automatic bed clamp, rack and pinion, etc. In addition,



the camera is fitted with a swing back and swing bed, and a Century Rapid Symmetrical Lens. The extra long bellows supplied with the Model 43 permits the use of

long focus lenses as well as making copies and negatives of objects close to the camera. The swing back is a useful adjustment and a decided advantage when photographing buildings, church spires and similar subjects.

The Shutter is our highest type—the No. 1 Century Automatic, operating for instantaneous, time and bulb exposures, with either finger or pneumatic release. Both lens and shutter are fully described on pages 33 and 36.

We recommend Model 43 as a particularly desirable camera at moderate cost, and an instrument capable of producing most excellent results.

### SPECIFICATIONS

	$3\frac{1}{4} \times 4\frac{1}{4}$	$4 \times 5$	$5 \times 7$
Dimensions . . .	$5\frac{5}{8} \times 2\frac{3}{4} \times 5\frac{1}{2}$	$6\frac{3}{8} \times 3\frac{1}{4} \times 6\frac{1}{4}$	$8\frac{5}{8} \times 3\frac{3}{4} \times 8\frac{1}{2}$
Length of Bellows	10"	12"	16 $\frac{1}{2}$ "
Weight . . . . .	31 ozs.	40 ozs.	4 $\frac{7}{8}$ lbs.

### PRICE

Including one Double Plate Holder and Sole Leather Carrying Case

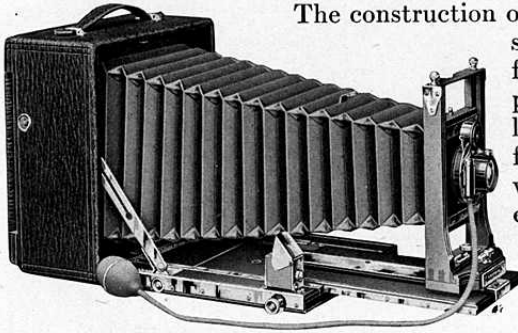
	$3\frac{1}{4} \times 4\frac{1}{4}$	$4 \times 5$	$5 \times 7$
Century Camera, Model 43 . . . . .	\$22.00*	\$25.00	\$33.00
Extra Double Plate Holders, each . . . . .	1.00	1.00	1.25

\*Not furnished with Revolving Back, but has Reversible Back.

## Century Camera, Model 46

WITH REVOLVING BACK

**I**N originality of design, perfection of detail, mechanical construction, complete adjustments and ease of manipulation, Model 46 stands pre-eminent. In this camera we introduce the following features: Double section, brass bound Telescopic Bed, Patent Pinion Lock, Swing Back and Bed, operated with Rack and Pinion.



The construction of the bed insures a smooth movement for focusing and provides an absolutely rigid support for the lens, even when the bellows is extended to its full capacity. The focusing pinion, when pushed in flush with the bed, securely

locks the second section in any desired position. The extra length of bellows admits of copying and similar work.

Model 46 is fitted with the Centar Lens, Series II, and No. 1 Automatic Shutter, with triplicate movement and separate lever for focusing. Lens and shutter are described on pages 33 and 37.

### SPECIFICATIONS

	4 x 5	5 x 7	6½ x 8½
Dimensions	6½ x 3¾ x 6¼	8⅞ x 4 x 8½	10⅝ x 4¾ x 10½
Length of Bellows	11½"	17"	21"
Weight	3 lbs.	5 lbs. 4 ozs.	8½ lbs.

### PRICE

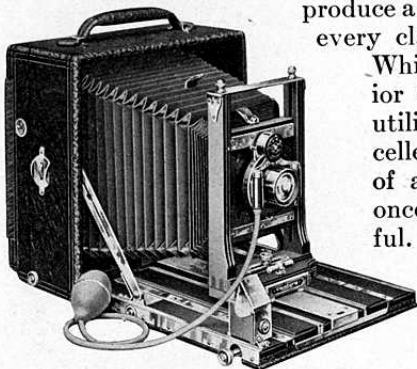
Including one Double Plate Holder and Sole Leather Carrying Case			
Century Camera, Model 46, with Centar Lens Series II and Auto. Shutter	4 x 5	5 x 7	6½ x 8½
	\$ 32.00	\$ 40.00	\$ 57.00
With Zeiss Kodak Anastigmat Lens and Compound Shutter	69.55	90.05	119.20
With Zeiss Protar Series VIIa Lens and Compound Shutter	109.05	130.55	170.20
With Zeiss Tessar Series IIb Lens and Compound Shutter	78.55	111.55	148.20
With Cooke Lens Series III and Compound Shutter	80.30	106.80	140.20
Extra for Graflex Focal Plane Shutter	22.00	24.00	27.00
Extra Double Plate Holders, each	1.00	1.25	1.75

*For complete particulars regarding Special Equipments with Anastigmat Lenses, see page 20.*

# Century Grand Senior

WITH REVOLVING BACK

**T**HERE is no camera on the market to-day that occupies as high a position in the opinion of the photographic public, as does the Century Grand Senior. This camera is the result of a well directed effort to concentrate in one instrument all the Century improvements and adjustments, and to produce a camera that is adaptable to every class of photographic work.



Century Grand Senior Partly Extended

While the Century Grand Senior is the camera of greatest utility, it also possesses an excellence of design and a richness of appearance that appeal at once to the sense of the beautiful. It is an instrument of precision, finished in perfect harmony with its technical perfection.

The Century Grand Senior, while differing in construction from

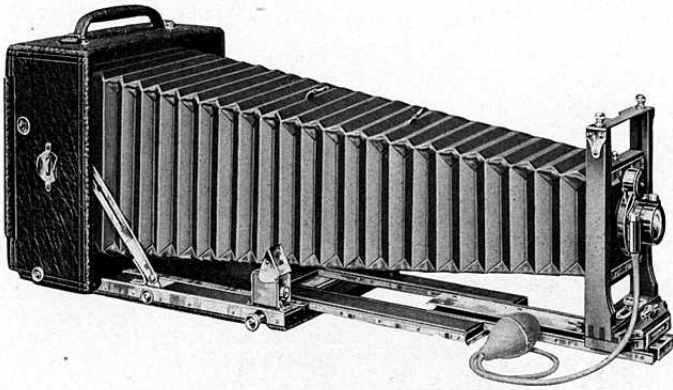
the Model 46, contains all the features which have popularized that camera, and in addition has—

- Detachable Side Arms, for Dropping Bed,
- Supplementary Bed for using extreme Wide Angle Lens, with Rack and Pinion Movement,
- Vertical Central Swing Back,
- Horizontal Side Swing for correcting violent perspective lines.

In connection with the Century Swing Bed, the Vertical and Horizontal Swing Backs give the greatest range and adjustment ever attained in a hand camera, and it is worthy of note that the Grand Senior is an uncommon example of a cycle type of camera having Double Swing Back and Swing Bed, free from all complicated parts and so neatly adapted as to add practically nothing to either the bulk or the weight. The telescopic bed is made in three sections, all operated by a single pinion, with the Century pinion lock. The same amount of friction exists whether the front section is fully or only partly extended, and by a peculiar arrangement of the wood and metal parts, the bed resists atmospheric changes to a remarkable degree.

The section carrying lens and shutter moves first by turning the focusing pinion, and when fully extended locks automatically into, and at the same time carries forward, the second

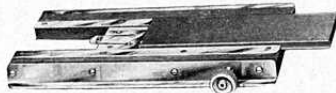
# CENTURY



Century Grand Senior, Fully Extended

section by means of a continuous rack. Each of the three sections is bound with metal to prevent any possibility of lost motion, and brass guides on top of the bed serve to insure strength and perfect rigidity. The bed is attached to the camera by a piano hinge extending the full width, adding strength and beauty to the entire equipment. The front has both vertical and horizontal movements, the former being governed by our new self-locking device. It is held securely at any desired point on the bed by our new Automatic Clamp.

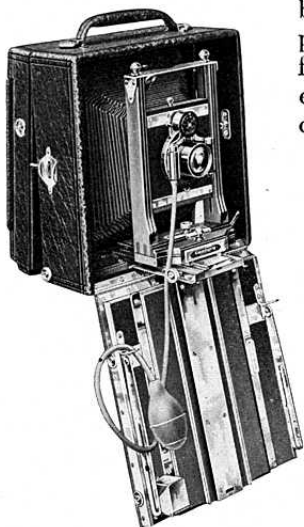
The Grand Senior is regularly equipped with Centar Lens, Series II. This is a lens of the symmetrical type, perfectly achromatic, rectilinear and of superior covering power and definition. Either the front or back combination can be used alone for distant views, mountain scenery, etc., and when so used the focus is double that of the compound lens. The lens is fully described on page 34. The No. 1 Automatic Shutter is regularly fitted. See page 37 for description. By means of a supplementary bed, very short focus or wide angle lenses can be used with equal facility. The main bed drops by detaching the side arms, and the supplementary bed, which can be instantly adjusted, supports the front. This bed also has rack and pinion for accurate focusing. The Wide Angle Bed, when adjusted, locks automatically in place, and can not



Supplementary Bed for Wide Angle Lenses



become accidentally detached. The horizontal and vertical swings are available for both regular and wide angle lenses. The Anastigmat Lens and Graflex Focal Plane Shutter would



Showing Supplementary Bed Attached  
for Wide Angle Lens

both of course add greatly to complete the Century Grand Senior, in fact the two should always be considered together in completing any high-class equipment. Various well-known

Anastigmats may be fitted. The Graflex Shutter is made to harmonize with the general appearance and finish of the camera and when ordered as part of one of these outfits, a carrying case to hold camera with shutter attached is supplied without extra charge, in place of regular carrying case.

As previously stated, the Century Grand Senior must be seen to fully appreciate its many meritorious and exclusive features. Our claims for superiority—in design, in construction, in adjustments, in

finish, in optical and mechanical excellence—will be fully substantiated by a critical examination.

### SPECIFICATIONS

	4 x 5	5 x 7	6½ x 8½
Dimensions . . . . .	6⅝ x 4 x 6¼	8⅞ x 4⅛ x 8½	10⅝ x 4¾ x 10½
Length of Bellows . . . . .	17"	23½"	28"
Weight . . . . .	3 lbs. 6 ozs.	5 lbs. 12 ozs.	9 lbs.

### PRICE

Including one Double Plate Holder and Plush-Lined

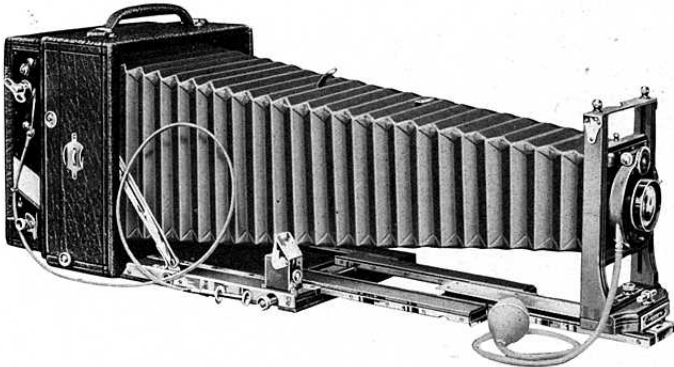
Sole Leather Case

	4x5	5x7	6½x8½
Century Grand Sr., with Centar Lens, Series II and Auto. Shutter . . . . .	\$53.00	\$63.00	\$80.00
With Zeiss Kodak Anastigmat Lens and Compound Shutter . . . . .	90.55	113.05	142.20
With Zeiss Protar Series VIIa Lens and Compound Shutter . . . . .	130.05	153.55	193.20
With Zeiss Tessar Series IIb Lens and Compound Shutter . . . . .	99.55	134.55	171.20
With Cooke Lens Series III and Compound Shutter . . . . .	101.30	129.80	163.20
With Turner-Reich Lens Series II and Compound Shutter . . . . .	101.80	121.05	163.20
Extra for Graflex Focal Plane Shutter . . . . .	22.00	24.00	27.00
Extra Double Plate Holders, each . . . . .	1.00	1.25	1.75

*For complete particulars regarding Special Equipments fitted with Anastigmat Lenses, see page 20.*

## Century Special Equipments

THE ACME OF PERFECTION



Grand Senior Special, Zeiss Kodak Lens and Graflex Focal Plane Shutter

**Century Special** The Century Models 46 and Grand Senior Specials are the regular cameras as described on pages 13 to 16, fitted with any of the following lenses: Zeiss Kodak Anastigmat, Bausch & Lomb Plagiatmat, Zeiss Tessar Series IIb, Zeiss Convertible Protar VIIa, Cooke Series III, Turner-Reich Series II and either a No. 1 Automatic, Compound, or Graflex Focal Plane Shutter.

**Anastigmat Lenses** The Anastigmat Lens was designed to overcome the defect which exists in the Rectilinear, or the Symmetrical, in that, in both of these two latter types it is not possible to bring into focus at the same time vertical or horizontal lines lying in the same plane. The optical properties introduced in its manufacture give, among other advantages, extreme speed, minute definition over the entire plate, great covering power, without the use of small stops or diaphragms, brilliant illumination and remarkable depth of focus. The reflected image of an Anastigmat, even with the lens at full opening, possesses a sharpness and noticeable "crispness" that is impossible to produce with the ordinary lens. It is adapted for every conceivable photographic purpose—portraiture, groups, landscapes, animal life, architectural subjects, interiors, copying, enlarging, process work, etc.—in fact, it is the universal lens.

The possession of an Anastigmat Lens broadens the photographer's opportunities. Instantaneous exposures are no longer confined to brilliant days when conditions of light are just

right—but fully-timed pictures may be made in cloudy and dull weather. The advantage of speed applies with equal force to time exposures. For example, if a portrait required an exposure of say four seconds, with an ordinary Symmetrical Lens, an Anastigmat would reduce the time nearly one-half—a very important consideration, especially if the subject happens to be a child.

**The Value of the Anastigmat with and without the Focal Plane Shutter**

The absence of completeness—and more than that—the want of thorough effectiveness in a Century Special Camera

without the proper kind of a shutter—prompts the recommendation of the Graflex Focal Plane Shutter as a necessary part of these outfits. All the advantages of a high-class equipment, made up of a Century Model 46 or a Century Grand Senior and a fast Anastigmat Lens, can not be secured without a Focal Plane Shutter. In fact, an outfit of this kind is worthy of the very best shutter that can be provided for it. The Graflex Focal Plane Shutter is fitted with a removable and interchangeable revolving back, so that the shutter may be removed from the camera whenever so desired, and the camera used in the ordinary manner, the Century No. 1 Automatic or the Compound Shutter being likewise, when so desired, a part of the outfit.

**Fitting Special Lenses and Shutters**

Fitting a shutter to an Anastigmat or other high-grade lens and the proper adjustment of lens and shutter to the camera is a delicate operation. Unless each lens is accurately centered and so mounted as to maintain absolutely the correct optical distance between front and back combinations, the best results cannot be obtained.

To avoid errors as well as to maintain our present high reputation for perfect goods, we do not list Centurys without lens or shutter, as we can only guarantee the whole equipment to prove satisfactory to the purchaser when the *camera, lens and shutter* are supplied by us.

Each Century Special is enclosed in a handsome sole leather carrying case, plush-lined, with lock, key and two snap catches. The case has a compartment for five extra plate holders. When Focal Plane Shutter is ordered as part of the outfit, a case which will hold the camera with shutter attached is supplied in place of regular case, without extra charge.

The prices are quoted on page 19.

## CENTURY SPECIAL EQUIPMENTS

The combinations listed below are carried in stock and can be promptly furnished. The cost of any other make of lens or shutter will be quoted on request. The following prices include the Compound Shutter. The Graflex Focal Plane Shutter will be added at prices quoted below.

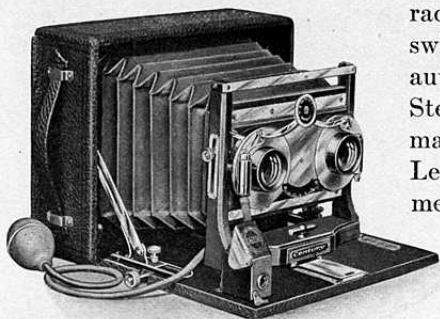
CAMERA	SIZE	WITH ZEISS KODAK ANASTIGMAT		WITH TURNER-REICH LENS SERIES II		WITH ZEISS PROTAR SERIES VIIa		WITH ZEISS TESSAR SERIES IIb	
		Lens No.	Compound Shutter	Lens No.	Compound Shutter	Lens No.	Compound Shutter	Lens No.	Compound Shutter
Petite Grand	3¼ x 5½	3	\$ 77.55			7	\$117.05	5	\$ 86.55
Century Model 46	4 x 5	3	69.55			7	109.05	5	78.55
Century Model 46	5 x 7	5	90.05			10	130.55	6	111.55
Century Model 46	6½ x 8½	6	119.20			13	170.20	7	148.20
Century Grand Senior	4 x 5	3	90.55	1	\$101.80	7	130.05	5	99.55
Century Grand Senior	5 x 7	5	119.05	2	121.05	10	153.55	6	134.55
Century Grand Senior	6½ x 8½	6	142.20	4	163.20	13	193.20	7	171.20
		WITH COOKE SERIES III							
		Lens No.	Compound Shutter						
Petite Grand	3¼ x 5½	4D	\$ 88.30						
Century Model 46	4 x 5	4D	80.30						
Century Model 46	5 x 7	6D	106.80						
Century Model 46	6½ x 8½	6½D	140.20						
Century Grand Senior	4 x 5	4D	101.30						
Century Grand Senior	5 x 7	6D	129.80						
Century Grand Senior	6½ x 8½	6½D	163.20						
<b>EXTRA FOR</b>									
Graflex Focal Plane Shutter			\$22.00	5 x 7		6½ x 8½		8 x 10	
Zeiss Protar Series V Wide Angle Lens			No. 1, 23.00	No. 2, 23.00		No. 3, 29.00		No. 4, 36.00	

To insure proper fitting, we recommend that cameras be bought from us complete with lenses listed. We will not hold ourselves responsible for results with any of our cameras when lenses are not fitted by us.

## Century Stereoscopic Cameras

WITH AUTOMATIC ROLLER DIVISION

**S**TEREOSCOPIC Photography is a branch of picture making which is daily enlisting more enthusiasts. The making of stereoscopic pictures is most attractive and fascinating. For this class of work a Stereo Grand Senior and 46 are offered. The Century Stereo Cameras embody all requisite adjustments—including



rack and pinion, swing back, swing bed, adjustable front, automatic bed clamp, Special Stereo Shutter, and a pair of matched Rapid Rectilinear Lenses. As far as outside dimensions, focal capacity and general design are concerned, the Stereoscopic Centurys, Models 46 and Century Grand

Senior correspond with the regular models, but in

place of one lens for full-size 5x7 pictures, they are fitted with a matched pair of lenses and the Special Stereoscopic Shutter. Models 46 and Grand Senior are fitted with a pair of matched Rapid Symmetrical Lenses. The regular lens and shutter for making full-size 5x7 pictures can be added to the outfit at any time, in which manner a most complete photographic equipment is provided.

### PRICE

Including Sole Leather Case and one Double Plate Holder.

Century Stereo Model 46 . . . . .	\$60.00
Century Stereo Grand Senior . . . . .	83.00
Extra for 5 x 7 Rapid Symmetrical Lens and No. 1 Automatic Shutter . . . . .	13.50

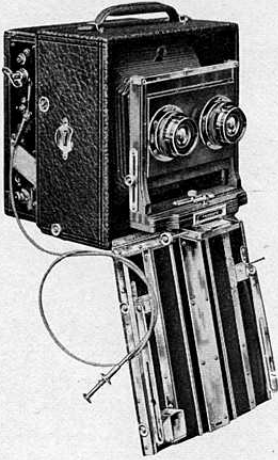


# CENTURY

## Century Stereo Special

**T**HE Stereo Century Special equipments are designed with the idea of offering the finest possible Stereoscopic outfit. They are equipped with high-grade Anastigmat Lenses and Graflex Focal Plane Shutter.

To these cameras may also be added a regular 5 x 7 lens and shutter of any desired type, so that when so equipped there is provided an outfit which, for range of work, can hardly be equalled.



Century Grand Sr. Stereo Special,  
with Zeiss Tessar Lenses

The Stereo Special, Grand Senior possesses great utility, by reason of the drop bed feature, by which it is rendered available for extreme wide angle stereo work. At the same time it possesses a bellows capacity of 23½ inches, which makes it possible to employ lenses of more than ordinary focal length.

With all Special Stereo outfits is supplied a plush-lined carrying case with lock and key, with space at one end for camera, with Focal Plane Shutter attached, and at the other for extra holders.

Every adjustment is fitted with the utmost accuracy and placed in positions that insure ease and rapidity of operation, rendering the Century Stereo Special a particularly valuable instrument for those engaged in the better grade of stereoscopic work.

### PRICE

Including Graflex Focal Plane Shutter, Double Plate Holder and Carrying Case.

*Century Stereo 46 fitted with*

Pair No. 2 Zeiss Kodak, Anastigmat Lenses . . . . .	\$112.20
Pair No. 4 Zeiss Tessar IIB Lenses . . . . .	173.20
Pair No. 2 Zeiss Protar VIIa Lenses . . . . .	187.20

*Century Grand Sr. Special fitted with*

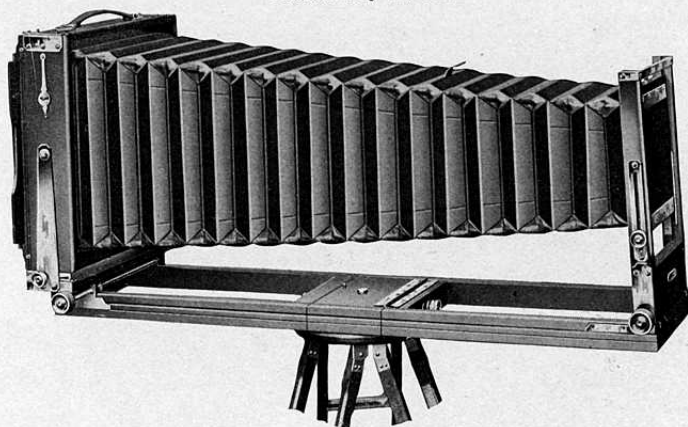
Pair No. 2 Zeiss Kodak, Anastigmat Lenses . . . . .	\$135.20
Pair No. 2 Zeiss Protar Series VIIa Lenses . . . . .	196.20
Pair No. 4 Zeiss Tessar Series IIB Lenses . . . . .	160.20
Extra for Pair No. 1 Series V Zeiss Protar Lenses . . . . .	48.50

# CENTURY

## Century View Camera No. 1

WITH DOUBLE GROOVED BED

Patented July 15, 1902



**T**O the advanced amateur or professional photographer who requires a camera that combines the highest degree of efficiency with a solidity of construction that will withstand the most strenuous usage, the Century View Camera presents many advantages over all other cameras of this type.

### SPECIAL FEATURES AND POINTS OF EXCELLENCE

1. A Double Grooved Bed. The scheme of operating the front and back of the camera in separate grooves on the bed is distinctly a "Century idea," covered by letters patent. This method permits the use of extra long side brackets supporting the front and back, insuring strength and solidity. A double grooved bed also provides for a very much shorter focus wide angle lens, as the front carrying lens can be brought closer to the ground glass than is possible with the ordinary type of view camera.

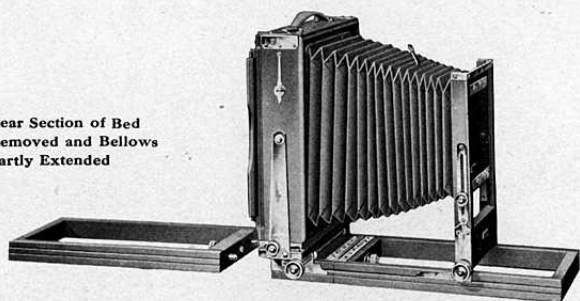
Camera  
Arranged  
for Extreme  
Wide Angle  
Lens



2. Perfect rigidity in every part in any position.

3. Extreme length of bellows for copying, enlarging, telephoto, and other work requiring long focus lenses.

Rear Section of Bed  
Removed and Bellows  
Partly Extended



4. The focus may be adjusted by moving the front or back as preferred; both are operated by rack and pinion.

5. Three Section Bed. The second section is hinged and arranged to fold close to the camera, even when lens and shutter are attached. The third section adjusts at the back by means of a large thumb-screw, and two brass dowell pins, avoiding any lost motion. The act of adjusting back section automatically releases body of camera, allowing back to be racked out on rear section.

6. Automatic Stop Lock, to prevent back going beyond edge of bed.

7. Adjustable Sliding Front of great range; rack and pinion movement.

8. Removable cut-out board in camera back for making two exposures on a plate.

9. Both Horizontal and Vertical Swings operate at the center, with set-screws at either side. Brass Plumb Indicator for adjusting swing back.

10. Reversible Back for horizontal and upright views.

#### FOCAL CAPACITY OR LENGTH OF BELLOWS

5 x 7—22 inches. 6½ x 8½—26 inches. 8 x 10—32 inches. 11 x 14—37 inches

#### PRICE

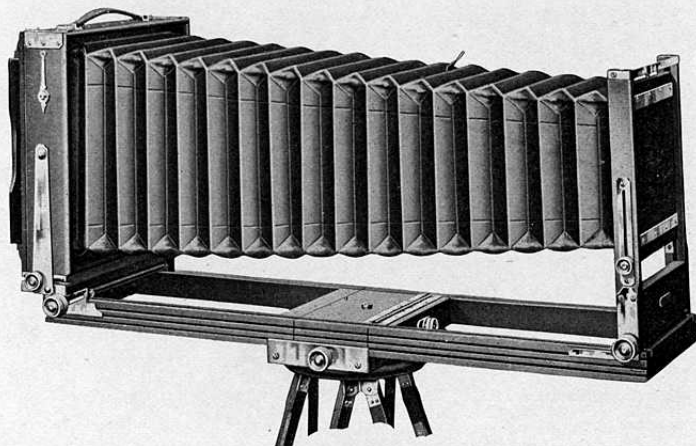
Including one Plate Holder and Canvas Case, with space for Five Holders.

	5 x 7	6½ x 8½	8 x 10	11 x 14
Century View Camera No. 1 . . . . .	\$21.00	\$22.00	\$25.00	\$40.00
Graflex Focal Plane Shutter, extra . . . . .	24.00	27.00	31.00	Not furnished
Rapid Symmetrical Lens and No. 1 Shutter, extra . . . . .	13.50	18.50	21.50	
Extra Double Plate Holders, each . . . . .	1.00	1.10	1.25	4.50
Carrying Case, if made to hold tripod, extra . . . . .	.75	.75	.75	



## Century View Camera No. 2

IT is decidedly inadequate to say that the Century View Camera No. 2 is the most superior View Camera which has ever been offered. This, however, was the one aim in the production of it and we feel satisfied that we have succeeded in accomplishing the desired results. The Century View No. 1



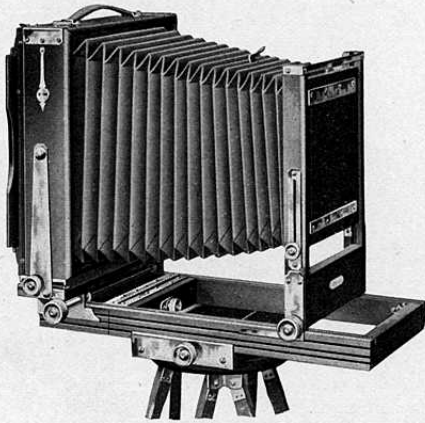
in itself represents an almost unexcelled type of View Camera. In the No. 2 we have incorporated many of the features of the No. 1—and they are all good ones—and these with a number of new and valuable improvements, have given the No. 2 an acknowledged and deserved prestige.

An exclusive Century idea is the auxiliary base, which is, in reality, a supplementary bed on which the entire camera moves forward and back, so that the weight is evenly distributed and the camera always in perfect balance when on the tripod, no matter whether an extra long focus or a wide angle lens is employed. The advantage of this feature will at once appeal to both the professional and the advanced amateur photographer.

The bellows is almost square, tapering but very little, thus giving an extra large front and lens board which will accommodate large lenses and likewise inside shutters if desired. Both swings, as well as the rising and falling front, are operated by rack and pinion.

One of the essential factors of Century success has been the close attention to the details of camera construction. Examine

# CENTURY



closely the No. 2 View and see whether this has not been borne out. Everything that counts in producing a rigid, accurate and adaptable camera finds place in it.

The Graflex Focal Plane Shutter when fitted to a Century View Camera naturally adds to the efficiency of the outfit, as an equipment is then provided which permits of all kinds of work from time exposures to fast speed work. The Graflex

Shutter when ordered for Century View Cameras is supplied to conform to the camera, being furnished in beautifully polished mahogany in every way in keeping with the camera.

#### FOCAL CAPACITY OR LENGTH OF BELLOWES

5 x 7—24 inches.      6½ x 8½—27 inches.      8 x 10—32 inches.

#### PRICE

Including one Plate Holder and Canvas Case, with space for Five Holders.

	5 x 7	6½ x 8½	8 x 10
Century View Camera No. 2 . . . . .	\$24.00	\$26.00	\$30.00
Graflex Focal Plane Shutter, extra . . . . .	24.00	27.00	31.00
Rapid Symmetrical Lens and No. 1 Shutter, extra . . . . .	13.50	18.50	21.50
Extra Double Plate Holders, each . . . . .	1.00	1.10	1.25
Carrying Case, if made to hold tripod, extra . . . . .	.75	.75	.75

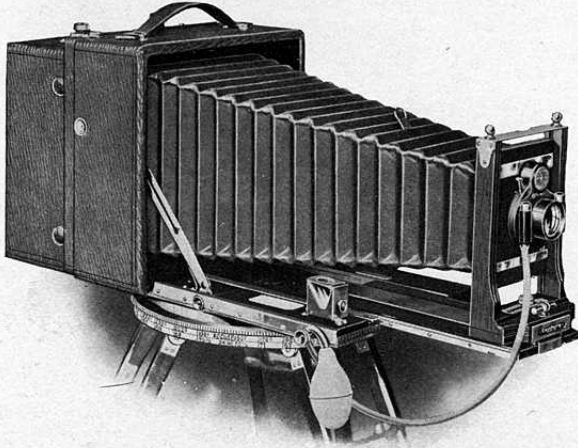


## The Cirkut Panoramic Outfit



Photo by METZGER, San Francisco

Up to the time that Cirkut Apparatus was introduced the extensive field of Panoramic Photography was practically closed, except to those who wished to engage in this interesting work in the most superficial way, or undertake the laborious process of making a series of negatives and matching them end to end. Cirkut Apparatus has eliminated all the obstacles in the way of true Panoramic Photography, and opened up an entirely new field of delightfully interesting photographic work.



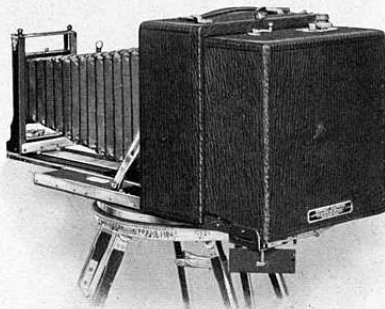
Panoramic photography—true panoramic photography—has been so long in presenting itself, on account of the many and great apparent difficulties in constructing apparatus that would do the work properly. An instrument that will expose a sensitized surface many feet in length, avoiding the violent distortion invariably in evidence in the ordinary type of panoramic camera, is truly a Panoramic Camera, and the only

one justly entitled to that distinction. That is the Cirkut. Its plan of construction does not contemplate the use of the short focus lens. It offers great latitude in the focal length of lenses. With the Cirkut, distortion is practically eliminated and the long-looked-for real Panoramic Camera is an accomplished fact.

**The Cirkut  
Outfit**

The wonderful success of the original No. 10 and No. 16 Cirkut Cameras has led to the introduction of the smaller No. 6 and No. 8 Outfits, the former adapted for film  $6\frac{1}{2}$  inches wide, the latter for 8-inch widths.

The Cirkut Panoramic Outfit is in itself a most complete affair, being made up of a camera which can be used in the ordinary manner for plates if desired, and a Panoramic Attachment which is easily and quickly attached to the camera, thus converting it into a Panoramic Outfit. The attachment in itself is much like an ordinary Cartridge Roll Holder, in that it is made to use Eastman Daylight-loading Cartridge Film. In addition it contains the mechanism which, when the outfit is in operation, unwinds the film past a slot on a roller and in so doing exposes it and at the same time revolves the camera about on an axis—a special tripod and top being furnished.



Attachment Fitted to a 5 x 7 Camera

A pressure on the release is all that is necessary to start the motor—another pressure stops it; thus negatives of any desired length up to 6 feet with the No. 6, and 8 feet with the No. 8 may be made. A complete circle of  $360^\circ$  may thus be photographed if desired.

There is an indicator on the top of the film holder showing the exact quantity of film exposed and that remaining unexposed. By another very ingenious arrangement one is enabled to determine, before exposure is made, how long a photograph the view decided on will be.

# CENTURY

Eastman Daylight-loading Film only is supplied for all Cirkut Apparatus.

In addition to the Panoramic Outfit, either Cirkut No. 6 or No. 8 provides an equipment which permits of its use as a regular hand camera for plates when so desired, and while the camera is adapted for panoramic work, by removing the film attachment, a revolving ground glass back is provided, which may be easily fitted, thus converting the outfit into a Revolving Back Plate Camera. With the No. 6 the camera is a 5 x 7; the No. 8 is  $6\frac{1}{2} \times 8\frac{1}{2}$ .

The camera has a double-section brass-bound telescopic bed, swing back and bed, rack and pinion movements, extra bellows length, and is in every way up to the Century Standard.

The lens regularly supplied is the Centar Series II, with Century No. 1 Automatic Shutter.

A double plate holder, a Crown Tripod (the best tripod made) complete the outfit. There is nothing in the entire field of photographic apparatus which for completeness is in any way comparable with the Cirkut Panoramic Outfit. A carrying case which will hold the complete outfit is furnished. Cirkut Outfits will be sold complete only.

## SPECIFICATIONS

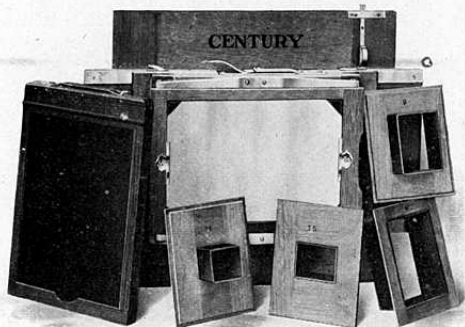
	No. 6	No. 8
Width of Photograph . . . . .	$6\frac{1}{2}"$	8"
Dimensions of Camera . . . . .	$8\frac{7}{8} \times 4\frac{1}{8} \times 8\frac{1}{2}$	$10\frac{5}{8} \times 4\frac{3}{4} \times 10\frac{1}{2}$
Weight of Camera . . . . .	$5\frac{3}{8}$ lbs.	$8\frac{1}{2}$ lbs.
Dimensions of Camera with Attachment	$8\frac{7}{8} \times 8 \times 8\frac{1}{2}$	$10\frac{5}{8} \times 8\frac{1}{4} \times 10\frac{1}{2}$
Weight " " " " . . . . .	9 lbs.	14 lbs.
Length of Bellows . . . . .	17"	21"

## PRICE

Cirkut Panoramic Outfit, including Century Camera, Series II Centar Lens, No. 1 Automatic Shutter and Panoramic Attachment; also removable, Revolving Back and Double Plate Holder for Camera, Tripod and Carrying Case to hold			
	No. 6		No. 8
complete equipment . . . . .	\$112.50		\$175.00
With B. & L.-Zeiss Protar VIIa Lens	No. 9	196.00	No. 12 . . . . . 283.00
$6\frac{1}{2}" \times 3'$ Film, Roll . . . . .		.80	
$6\frac{1}{2}" \times 6'$ " " . . . . .		1.60	
8" x 4' " " . . . . .			1.30
8" x 8' " " . . . . .			2.60

# CENTURY

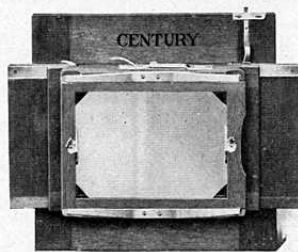
## The Century Multiplying Back



Century Multiplying Back

**T**HE Century Multiplying Back enables the user of an 8 x 10 or 6½ x 8½ view camera to make 1, 2, 4, 9, 15 or 24 exposures on a 5 x 7 plate. It is extremely simple in operation, substantially constructed and highly finished to harmonize with the Century View Cameras.

This back interchanges with the regular reversing back on the View Camera, and can be instantly attached or removed.



### PRICE

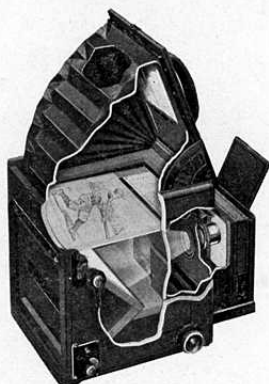
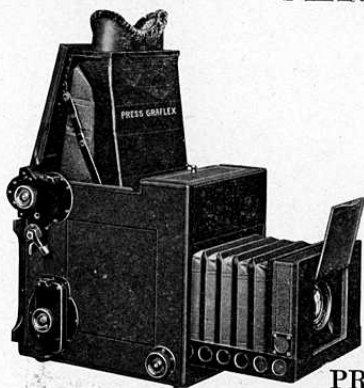
Century Multiplying Back, fitted to Century or Empire State View  
Cameras 8 x 10 or 6½ x 8½ . . . . . \$10.00  
Price includes one 5 x 7 Century View Plate Holder.

## Graflex Photography

CONCISELY described, the Graflex is the camera of unequalled effectiveness. Its effectiveness is evidenced in its adaptability for almost every purpose to which a hand camera may be applied. Its *unequalled* effectiveness lies in the fact that the Graflex will do all that any hand camera will do, and more. An entirely original type of construction with exclusive ideas, the Graflex possesses, not alone, most superior advantages for high-speed work, but employs these same features so as to make it an exceedingly convenient and an unusually available instrument for every day hand camera work. It is in fact the universal camera. There is a sense of certainty with the Graflex that enhances greatly the pleasure of doing photographic work. The subject is carefully composed on the focusing screen, right side up, and the picture is taken just as the operator wants it and just when he wants it.

The advantage of accurate focusing is so thoroughly appreciated by every photographic worker that a discussion of it is quite unnecessary, but the inverted image on the focusing screen with the bothersome focusing cloth, together with the time necessarily lost between the focusing of the camera and the making of the exposure, minimizes greatly the value of this feature. Anyone who has ever photographed will readily appreciate the value of a focusing screen on which the object may be seen full size of plate, right-side up, particularly when there are no loose parts or awkward operations required. Add to this the advantage of making the exposure at the very instant the object is seen on the screen, and that this exposure can be varied from the highest to the lowest speeds, and we have a feature indispensable for speed work, and obviously of great value for nearly all kinds of photography. It is this, together with its famed Focal Plane Shutter, which has made the Graflex, the camera admired by photographic enthusiasts everywhere—the universal camera for speed and time work. It is indispensable for the one and invaluable for the other. Graflex Cameras are fully described in a special Graflex catalog, mailed free upon request.

# CENTURY



## PRICES

### 1-A GRAFLEX

Without Lens	2½ x 4¼	
With Zeiss Kodak Lens, F. 6.3, No. 2		\$ 60.00
With B. & L.-Zeiss Tessar Series IIb, F. 6.3, No. 4		82.00
With B. & L.-Zeiss Tessar Series Ic, F. 4.5, No. 14		94.50
With Cooke Series, IV, F. 5.6, No. 25		100.50
		98.00

### 3-A GRAFLEX

Without Lens	3¼ x 5½	
With Zeiss Kodak Lens, F. 6.3, No. 4		\$ 75.00
With B. & L.-Zeiss Tessar Series IIb, F. 6.3, No. 5a		105.50
With B. & L.-Zeiss Tessar Series Ic, F. 4.5, No. 15a		125.50
With Cooke Series IV, F. 5.6, No. 27		132.50
		129.00

### AUTO GRAFLEX

	3¼ x 4¼	4 x 5	5 x 7
Without Lens	\$55.00	\$ 65.00	\$ 80.00
With Zeiss Kodak Lens, F. 6.3	No. 2 77.00	No. 3 92.00	No. 5 120.00
With B. & L. Zeiss Tessar, Series IIb, F. 6.3	No. 4 89.50	No. 5 101.00	No. 6 141.50
With B. & L. Zeiss Tessar, Series Ic, F. 4.5	No. 14 95.50	No. 15 112.00	No. 16 152.00
With Cooke Series IV, F. 5.6	No. 25 93.00	No. 26 108.00	No. 27 134.00

### REVOLVING BACK L. F. AUTO GRAFLEX

	3¼ x 4¼	4 x 5
Without Lens	\$110.00	\$125.00
With Zeiss Kodak Lens, F. 6.3	No. 5 150.00	No. 6 179.00
With B. & L.-Zeiss Tessar Series IIb, F. 6.3	No. 5a 160.50	No. 7 208.00
With B. & L.-Zeiss Protar Series VIIa, F. 6.3	No. 10 190.50	No. 13 230.00
With Cooke Series IV, F. 5.6	No. 27 164.00	No. 27½ 205.00

### PRESS GRAFLEX

	5 x 7
Without Lens	\$110.00
With Zeiss Kodak Lens, F. 6.3, No. 5	150.00
With B. & L.-Zeiss Tessar Series IIb, F. 6.3, No. 6	171.50
With B. & L.-Zeiss Tessar Series Ic, F. 4.5, No. 16	182.00
With Cooke Series II, F. 4.5, No. 22	167.50

### STEREO AUTO GRAFLEX

	5 x 7
Without Lenses	\$200.00
With Matched Pair Zeiss Kodak Lenses, F. 6.3, No. 3	254.00
With Matched Pair B. & L.-Zeiss Tessar Series IIb, F. 6.3, No. 5	272.00

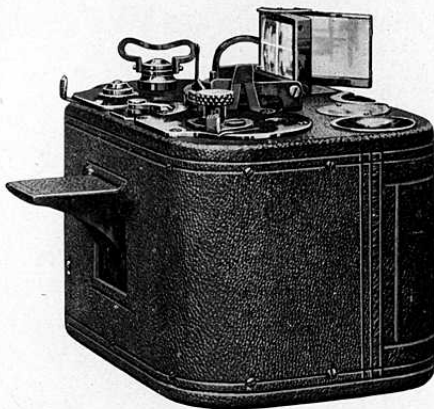
### NATURALISTS' GRAFLEX

	4 x 5
Without Lenses	\$190.00
With B. & L.-Zeiss Protar Series VIIa, No. 19	376.00



## The No. 0 Graphic

**T**HE No. 0 Graphic Camera will at once appeal to photographic workers requiring a camera of the smallest possible size, extreme efficiency, and at the same time so simple in operation that the merest novice in photography will secure the greatest possible percentage of perfect results. Briefly the No. 0 Graphic is a high grade, fixed or universal focus film camera, fitted with a high speed Anastigmat Lens and Graflex Focal Plane Shutter.



The No. 0 Graphic

The No. 0 Graphic requires no focusing; everything within its range is absolutely sharp. It uses a standard size of regular Kodak film, the No. 0. F. P. K. Film for pictures  $1\frac{5}{8} \times 2\frac{1}{2}$ . It is fitted with a Zeiss Kodak Anastigmat Lens working at f-6.3, and a Graflex Focal Plane Shutter actuated to give exposures of any duration from time to 1-500 of a second. From this it is instantly apparent that the No. 0 Graphic embodies a higher degree of efficiency than has ever been contained in a fixed focus camera. The negatives made with the No. 0 Graphic show such wonderful quality that enlargements many times the original size may be made, and still retain remarkable crispness and brilliancy. The No. 0 Graphic is fully described in a special booklet which will be mailed upon request.

### PRICE

No. 0 Graphic Camera fitted with Zeiss Kodak Anastigmat Lens, f-6.3.	\$50.00
No. 0 Graphic Carrying Case . . . . .	4.00
No. 0 Graphic Enlarging Camera. . . . .	24.00

## Century Lenses

CENTURY Lenses are made in the largest and best equipped optical factory in the country, that of Bausch & Lomb Optical Company. Every process, from the selection of the raw material through the successive steps of grinding, polishing, cementing and mounting, is accurately controlled. Every lens that does not reach the proper standard of quality to which all Century Lenses must conform, is rejected.

The Rapid Symmetrical is a higher type of lens than the rectilinear, and possesses qualities not found in the ordinary double combination lenses of the rectilinear form. It is made of superior glass and ground upon curves that insure increased covering power, ample speed for instantaneous exposures and a flat field.

The Centar Series II is a Symmetrical type of lens perfectly achromatic, rectilinear, and of superior covering power and definition. It is admirably adapted for portraits, groups, architectural subjects, landscapes, copying, etc.

The front and back combinations may be used alone as long focus objectives. In this form they are particularly well adapted for distant views, mountain scenery and all remote subjects, where extreme speed is not essential. The focal length of either front or back lens, when used alone, is double that of the complete lens, and the size of the image is, therefore, about twice that given by the complete lens.

### WIDE ANGLE LENSES

A Century Wide Angle Lens is a valuable addition to any outfit. It includes from twenty-five to thirty degrees wider field than the Rapid Rectilinear, Rapid Symmetrical, or Centar Lenses and is particularly valuable for confined situations—interiors and certain architectural subjects. Being much shorter in focus, it permits placing the camera closer to the object.

Century Wide Angle Lenses fit the same shutter and interchange with the Rectilinear, Rapid Symmetrical and Centar Lenses.

#### PRICE

4 x 5, \$5.00

5 x 7, \$7.50

6½ x 8½, \$12.00

## Anastigmat Lenses

**T**HE Rectilinear or Symmetrical Lenses with which hand cameras are ordinarily equipped possess one inherent defect impossible to overcome. This defect is astigmatism, which may be defined as the inability to focus at the same time vertical and horizontal lines lying in the same plane.

The Anastigmat Lens with its superior correction has several advantages over the Rectilinear Lens. It has greater speed because it may be used with full opening, and the resulting image will be brilliant and sharp all over. The sharpness is not confined to one spot, as is the case with the Rectilinear Lens when used with full opening. It has greater covering power, that is, area in which the image is sharply defined and a flatter field permitting the formation of flat images, not curved. Its greater speed and covering power enable it to be used, therefore, advantageously under conditions where the ordinary lens is valueless.

The Graflex Focal Plane Shutter will enable the operator to work the Anastigmat Lens to its utmost capacity.

### ZEISS KODAK ANASTIGMAT

The Zeiss Kodak Anastigmat is a lens possessing the utmost accuracy of definition and covering power, and at the same time working at a speed sufficient for ultra rapid photography and Focal Plane Shutter work. This lens is particularly well adapted to all kinds of hand and view camera work.

No.	Size	Equivalent Focus, Inches	Price		
			Lens in Barrel	Lens in Volute Shutter	Lens in Compound Shutter
2	$3\frac{1}{4} \times 4\frac{1}{4}$	5	\$22.00	\$39.00	\$34.00
3	$\left\{ \begin{array}{l} 3\frac{1}{4} \times 5\frac{1}{2} \\ 4 \times 5 \end{array} \right\}$	$6\frac{1}{8}$	27.00	44.00	43.25
4		$6\frac{7}{8}$	30.50	47.50	45.00
5	$5 \times 7$	$8\frac{1}{4}$	40.00	58.50	56.25
6	$6\frac{1}{2} \times 8\frac{1}{2}$	10	54.00	72.50	74.00

### BAUSCH & LOMB-ZEISS NEW TESSAR f-4.5, SERIES Ic

No.	Size	Equivalent Focus, Inches	Price	
			Lens and Barrel with Iris Diaphragm	Fitted with Aluminum Volute Shutter
15	4 x 5	6	\$ 47.00	\$ 65.50
15a	5 x 7	$7\frac{1}{8}$	57.50	76.00
17	$6\frac{1}{2} \times 8\frac{1}{2}$	$9\frac{1}{8}$	115.50	135.50
18	8 x 10	$11\frac{7}{8}$	162.00	

# CENTURY

## BAUSCH & LOMB-ZEISS CONVERTIBLE PROTAR f-6.3 SERIES VIIa

Are composed of two single, perfectly corrected Anastigmats, which may be used singly or in combination. When the single elements have different foci, the lens is convertible into three lenses of different foci, having a speed of f-7 or f-7.7, which is almost twice that of the ordinary camera lens. When elements have similar foci the speed is f-6.3.

No.	Size in Inches of Plate Covered with Full Aperture	Combinations of Single Protars, Focus		Combined Equivalent Focus Inches	Speed	Price Lens only
		Front Lens	Back Lens			
1	3 $\frac{1}{4}$ x 3 $\frac{1}{4}$	7 $\frac{3}{15}$	7 $\frac{3}{15}$	4 $\frac{1}{8}$	f-6.3	\$48.50
2	3 $\frac{1}{4}$ x 4 $\frac{1}{4}$	8 $\frac{3}{4}$	7 $\frac{3}{15}$	4 $\frac{1}{2}$	f-7	52.50
3	4 x 5	11 $\frac{3}{15}$	7 $\frac{3}{15}$	5	f-7.7	57.50
4	4 x 5	8 $\frac{3}{4}$	8 $\frac{3}{4}$	5 $\frac{1}{3}$	f-6.3	56.00
5	4 $\frac{1}{4}$ x 6 $\frac{1}{2}$	11 $\frac{3}{15}$	8 $\frac{3}{4}$	5 $\frac{5}{8}$	f-7	61.50
6	4 $\frac{1}{4}$ x 6 $\frac{1}{2}$	13 $\frac{3}{4}$	8 $\frac{3}{4}$	6 $\frac{1}{8}$	f-7.7	68.50
7	4 $\frac{1}{2}$ x 7 $\frac{1}{4}$	11 $\frac{3}{15}$	11 $\frac{3}{15}$	6 $\frac{3}{8}$	f-6.3	66.50
8	5 x 7	13 $\frac{3}{4}$	11 $\frac{3}{15}$	7	f-7	73.50
9	5 x 8	16 $\frac{1}{8}$	11 $\frac{3}{15}$	7 $\frac{1}{2}$	f-7.7	86.00
10	5 x 8	13 $\frac{3}{4}$	13 $\frac{3}{4}$	7 $\frac{7}{8}$	f-6.3	80.50
11	6 $\frac{1}{2}$ x 8 $\frac{1}{2}$	16 $\frac{1}{8}$	13 $\frac{3}{4}$	8 $\frac{1}{2}$	f-7	93.00
12	6 $\frac{1}{2}$ x 8 $\frac{1}{2}$	18 $\frac{1}{8}$	13 $\frac{3}{4}$	9 $\frac{1}{8}$	f-7.7	114.50
13	6 $\frac{1}{2}$ x 8 $\frac{1}{2}$	16 $\frac{1}{8}$	16 $\frac{1}{8}$	9 $\frac{1}{4}$	f-6.3	105.00

## BAUSCH & LOMB-ZEISS TESSAR f-6.3 SERIES IIB

The Tessar is light and compact and particularly adapted for hand cameras. It gives sharp definition, illumination of unusual uniformity, and great covering power.

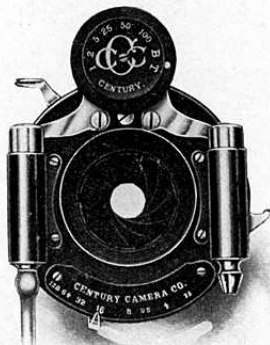
No.	Size of Plate Covered with Stop f-6.3, Inches	Equivalent Focus Inches	Price	
			Lens Only	Fitted with Aluminum Volute Shutter
4	3 $\frac{1}{4}$ x 4 $\frac{1}{4}$	5 $\frac{3}{8}$	\$ 34.50	\$ 51.50
5	4 x 5	6 $\frac{1}{8}$	36.00	53.00
5a	5 x 7	7 $\frac{1}{15}$	50.50	69.00
6	5 x 8	8 $\frac{1}{4}$	61.50	80.00
7	6 $\frac{1}{2}$ x 8 $\frac{1}{2}$	10	83.00	101.50
8	8 x 10	12	122.50	142.50

## COOKE SERIES III f-6.5

No.	Equivalent Focus, Inches	With Full Apertures to Cover Plates	With Iris Diaphragm and Standard Flange
1	3	2 $\frac{1}{4}$ x 2 $\frac{1}{4}$	\$27.50
2	4 $\frac{1}{4}$	3 $\frac{1}{4}$ x 3 $\frac{1}{4}$	32.00
3	5	3 $\frac{1}{4}$ x 4 $\frac{1}{4}$	35.00
4	6 $\frac{7}{8}$	4 x 5	39.50
5	7 $\frac{1}{2}$	5 x 7	48.50
6	8 $\frac{1}{4}$	5 x 8	53.00
7	11	7 x 9	91.00

# CENTURY

## Century Shutters



No. 1 Century Automatic Shutter

**C**ENTURY Shutters are made especially for Century Cameras, and are exclusive in design. They are beautifully finished, the bodies being a rich black with nickel fittings.

The Focusing Lever applied to all regular Century Shutters throws back the shutter leaves to permit focusing on the ground glass screen. With other iris diaphragm shutters it is necessary to set the dial for "time" exposures--then press the bulb or trigger to open the lens. All setting and pressing is dispensed with in the Century Shutters, as it matters not how the indicator stands, when you wish to focus, simply adjust the focusing lever at the side. The shutter leaves will part—giving full aperture of the lens.

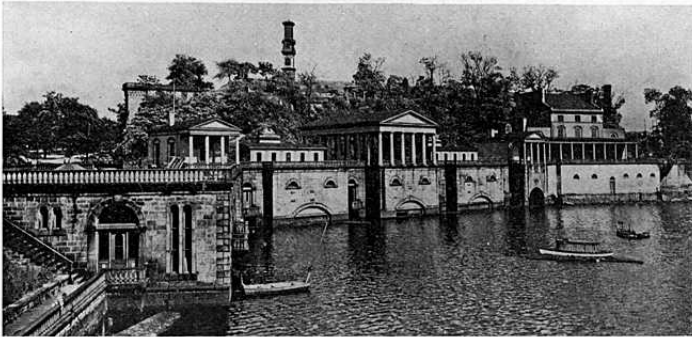
All Century Shutters have triplicate movement—operating for instantaneous, time and bulb exposures. The various speeds in fractional parts of seconds are governed by an indicator and dial at the top while the iris diaphragms are



regulated by a lever at the bottom of the shutter. The various apertures are marked on a scale in accordance with the U. S. system. The first cut on page 37 illustrates our No. 1 Automatic Double Valve Shutter.

The mechanism is so arranged that after an exposure is completed the shutter automatically sets itself for the next picture. There can never be a question as to "whether the shutter is set," as it is ready at all times, being released and set simultaneously by either the finger or the bulb.

The shutter blades are manufactured of a special material not affected by variation in temperature, and are shaped so as to give the most even illumination.



## Graflex Focal Plane Shutter

Patented Feb. 5, 1907, and Aug. 21, 1908.

For ultra rapid photography, the Graflex Shutter presents numerous advantages over those working in front of, between or behind the lens. To secure successful negatives of rapidly moving

objects, such as horse and automobile races, railroad trains, foot-ball games, base-ball contests, etc., there is no style of shutter that can equal the Graflex. And while constructed primarily for high-speed work, it is also adapted for slow automatic exposures and time exposures of any duration.



Its position immediately in front of the sensitive plate or film insures the distribution of light with equal intensity upon every portion of the

sensitized surface. In addition, the principle upon which it is constructed not only gives the maximum in speed, but at the same time the plate receives a greater volume of light in a given time than with any other type of shutter.

In comparing the Focal Plane Shutter with the between-lens type of shutter, which is most commonly in use, particular stress should be laid upon the fact that with the Focal Plane Shutter there is absolutely no diminishing of the volume of light passing through the lens; in other words, the full efficiency of the aperture used is maintained during exposure.

With between-lens type of shutter there is only a fraction of the exposure given with the working aperture of the lens, varying from that down to the pin-hole. It therefore follows that with the between-type of shutter high-speed exposures would be ineffective, owing to the method of lighting.



Graflex Negative

By simply turning a small key the speed can be varied from "time" to 1-1000 part of a second. The maximum speed of an ordinary shutter placed at the diaphragm of a lens does not exceed 1-100 of a second and many shutters of this class do not give shorter exposures than 1-50 of a second.

The Graflex Shutter is instantly set for any exposure by a *half-turn* of the winding key. Dials on the outside indicate both the size of the curtain aperture and the tension of roller spring controlling the speed.

# CENTURY

The Curtain of the Graflex Shutter is made on an entirely new principle—in one long piece, with apertures ranging from full opening to 1-8 of an inch. This insures an absolutely uniform aperture for the admission of light, and not a wedge-shape opening, as is so often the case with shutters having a double adjustable curtain.

The Graflex Shutter is as easy to operate as an ordinary shutter and can be adapted to all makes of folding plate cameras. Graflex Focal Plane Shutters for Century Cameras are fitted to the Century without extra charge, but when ordered for other cameras we add cost of adapting.

**The Anastigmat and Focal Plane Shutter** Realizing that the full possibilities of the Anastigmat lens cannot be secured with the ordinary type of shutter, Century Special Outfits are now listed in connection with the Graflex Focal Plane Shutter. A good camera and a good lens should have a good shutter, and a Century Special with one of these shutters leaves very little to be desired. For prices of these outfits see page 20.



## SPECIFICATIONS

Dimensions	4 x 5	5 x 7	6½ x 8½	8 x 10
Weight	6¼ x 6¼ x 2 15 ozs.	8¼ x 8¼ x 2 22 ozs.	9⅜ x 9⅜ x 2½ 26 ozs.	11⅝ x 11⅝ x 2½ 32 ozs.

## PRICE

Graflex Focal Plane Shutter . . .	4 x 5 \$22.00	5 x 7 \$24.00	6½ x 8½ \$27.00	8 x 10 \$31.00
-----------------------------------	------------------	------------------	--------------------	-------------------

## Century Plate Holders

IT is obvious that perfect pictures cannot be obtained from fogged plates. Fog results, many times, from the use of defective holders, which are faulty in design and construction. We can guarantee successful results only when Century Holders are used in Century Cameras. Century Plate Holders are made throughout of hard wood, all joints dovetailed and



# CENTURY

fitted with our new light-excluding cut-off—a perfect device—which prevents light passing through the narrow opening when the slide is inserted or withdrawn. They are compact, light and easy to load, and the plate can be inserted or removed without touching the sensitive surface. The holder is designed so as to allow the exposure of the full width of the plate.

To fill the holder it is only necessary to rest the plate on a wooden ledge or bar at one end, press the bar down and the plate falls in place.

All Century Holders, excepting those furnished for View Cameras, are fitted with special rubbed slides—experience having demonstrated their superiority over all other slides. We use materials for slides made to our order especially for Century Holders. Century Holder Slides

Will not Electrify and Cause Fog;  
Will not Collect Dust;  
Will not Crack, or Split;—

It is impossible to avoid these conditions with hard rubber.

## PRICE

$3\frac{1}{4} \times 4\frac{1}{4}$ , each \$1.00  
 $4 \times 5$ , each 1.00

$5 \times 7$ , each \$1.25  
 $6\frac{1}{2} \times 8\frac{1}{2}$ , each 1.75

$8 \times 10$ , each \$2.00  
 $11 \times 14$ , each 4.50



## Daylight Roll Holders

FOR CARTRIDGE FILM

**T**HE Roll Holder is about the size of three double plate holders, and will hold Film Cartridges of twelve exposures. By means of a Cartridge Roll Holder those desiring to avail themselves of the advantages of film may do so at

# CENTURY

small outlay, as the Roll Holder is adaptable to all Centurys except  $3\frac{1}{4} \times 5\frac{1}{2}$  Petite No. 3 and Petite Grand.

The Cartridge Holder loads in daylight and is interchangeable with regular plate holders in the field.

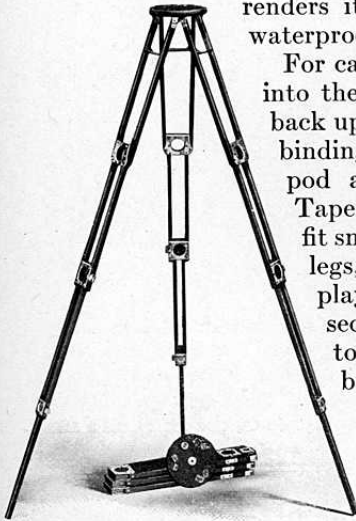
## PRICE

	$3\frac{1}{4} \times 4\frac{1}{4}$	$4 \times 5$	$5 \times 7$
Cartridge Roll Holder fitted to Century Camera	\$5.00	\$5.00	\$6.50

## The Crown Tripod

Patented June 23, 1903

**T**HE Crown is a four-section telescopic folding tripod, absolutely rigid, quickly set up and readily adjusted for height. It is made of selected, straight-grained cherry, soaked in an oil bath for ten days before being finished. The wood is then rubbed down and shellaced. This treatment renders it extremely tough and practically waterproof.



For carrying, the lower sections telescope into the third and the upper section folds back upon it, making it very compact. All binding screws on lower sections of this tripod are "upset" and cannot be lost. Taper pins in the ear pieces of the head fit snugly into metal-tipped sockets of the legs, preventing loose joints and side play. Expansion brackets in the upper section make it impossible for the legs to be detached from the head until brackets are folded.

The No. 1 when closed measures  $16\frac{1}{4}$  inches and weighs, with top, 36 ounces. When extended to its full capacity, it stands  $4\frac{1}{2}$  feet high.

The No. 2 closed measures  $17\frac{1}{2}$  inches and weighs, with top, 65 ounces. When extended, it has a height of  $4\frac{2}{3}$  feet.

The No. 3 closed measures 20 inches and weighs, with top, 70 ounces. When extended, it has a height of  $5\frac{1}{2}$  feet.

## PRICE

No. 1 Crown Tripod, with 4-inch top	\$5.50
No. 2 Crown Tripod, with 6-inch top	6.00
No. 3 Crown Tripod, with 6-inch top	7.50

## The Century Color Screen

**T**HE Century Color Screen is made from two pieces of selected optical glass, between which is a stained balsam, spectroscopically tested, to give the best rendering of color values. They are fitted in a polished and lacquered brass mount with an adjustable clamp ring, which permits the screen to be used on a number of lenses.

The Century Color Screen is indispensable for photographing flowers, fruit and other highly colored subjects, and for securing cloud effects it has no equal.

In ordering give exact diameter of lens hood.

### PRICE

- No. 1, 1¼ inches in dia. \$2.25
- No. 2, 1⅞ inches in dia. 2.75
- No. 2½, 2½ ins. in dia. 3.00
- No. 3, 2⅞ inches in dia. 3.25



## Carrying Cases

**C**ENTURY Cases are made of the best sole leather with solid corners—not stitched. The camera is carried in one end and extra plate holders in the other. Cases for Grand Cameras are plush-lined.

View Camera Cases, as listed below, are oblong. They are covered with canvas, lined with cloth, and have two compartments, one for camera and the other for holders.

Style Camera	3¼x4¼	3¼ x5½	4 x 5	5 x 7	6½x8½
Century Models 43 and 46 . . .	\$3.50		\$4.00	\$5.00	\$6.50
Century Grand Senior . . .			5.00	6.00	8.90
Century Petite Grand . . .		\$5.00		Shoulder Straps for 4x5 cameras, 30c; for 5x7 cameras, 65c.	
Petite Centurys . . .	2.25	2.50	2.50		
Petite Centurys velvet-lined . . .	3.00	3.50	3.50		

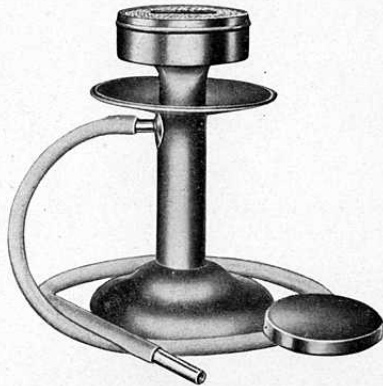
### CANVAS COVERED CASES FOR VIEW CAMERAS

	5 x 7	6½x8½	8 x 10	11 x 14
Century View No. 1 and No. 2 . . .	\$2.00	\$2.25	\$2.50	\$3.50
If made to hold tripod, extra . . .	.75	.75	.75	
Lock and Key, extra . . .	.75	.75	.75	1.00

## Crown Flash Lamp

*For Pure Magnesium Only*

**T**HE Crown Flash Lamp is so constructed that the magnesium powder is stored in the body of the lamp and blown up through the center of flame, thoroughly consuming it and producing a powerful light. The head of lamp is filled with lamp-wick, saturated with alcohol. This gives a large flame, which is very essential in a perfect flash lamp. The head of lamp is removable in order to fill the magazine with magnesium powder. A safety disc is provided, to protect the hand when using the lamp. Tube and mouth pieces are also furnished.



The double spreader will not clog up and is more powerful than any other lamp of double its cost now on the market. Long or short flashes can be made.

The Crown is the perfection of flash lamps, being safe, economical and reliable. It is finished in polished nickel and presents a very handsome appearance. *Price, \$1.50.*

## Century Portrait Attachment

**F**OR making large portraits with short bellows cameras. We can furnish this attachment for all makes of cameras.

### PRICE

4 x 5, \$1.50

5 x 7, \$1.50

6½ x 8½, \$2.00



Graflex Negative

# CENTURY

## Miscellaneous

<i>Tripods, Century Compact,</i>		<i>Tripod Screws</i>		<b>Price</b>
<i>Three Fold</i>				
No. 1 . . .	\$1.70	No. 3 . . .	\$3.50	For Leg . . . . . \$ .25
No. 2½ . . .	3.00	No. 4 . . .	4.50	For Top, up to 11 x 14 . . . . . .30
				For Top, 11 x 14 . . . . . .40
<i>Inside Kits (To Fit any Holder)</i>		<i>For Ground Glass, Extra</i>		
4 x 5 any opening . . . . .	\$ .20	<i>Quality, Satin Finish</i>		
5 x 7 " " . . . . .	.25	3¼ x 4¼ . . . . .	.12	5 x 8 \$ .20
6½ x 8½ " " . . . . .	.30	3¼ x 5½ . . . . .	.15	6½ x 8½ .20
8 x 10 " " . . . . .	.35	4 x 5 . . . . .	.15	8 x 10 .30
		5 x 7 . . . . .	.18	11 x 14 .50
<i>Lens Boards</i>		<i>Special Rubbed Holder Slides</i>		
For Centurys up to 5 x 7 . . . . .	\$ .35	3¼ x 4¼ . . . . .	.20	\$ .20
For Centurys above 5 x 7 . . . . .	.50	3¼ x 5½ . . . . .	.25	.25
For Stereo Century . . . . .	.50	4 x 5 . . . . .	.25	.25
For View Cameras up to 8x10 . . . . .	.50	5 x 7 . . . . .	.35	.35
For Century View, 11 x 14 . . . . .	.70	6½ x 8½ . . . . .	.45	.45
When ordering lens boards for View Cameras, specify whether for No. 1 or No. 2.				
<i>Bellows</i>		<i>Reversible Backs</i>		
5 x 7 Century View, No. 1	\$4.00	For 5 x 7 View Cameras	\$ 7.50	
6½ x 8½ Century View, No 1 or No. 2 . . . . .	5.00	For 6½ x 8½ " "	9.00	
8 x 10 Century View, No. 1 or No. 2 . . . . .	6.00	For 8 x 10 " "	11.00	
11 x 14 Century View . . . . .	8.00	For 11 x 14 " "	14.00	

## Our Terms

ALL quotations are f. o. b. Rochester. We make no charge for packing, and guarantee safe arrival of goods when forwarded by express. Shipments by mail are always at the risk of purchaser, and postage must invariably be added to the cost. We prefer that remittance be made by Draft on New York, Post-Office or Express Money Order or Registered Letter. Personal checks, when from parties unknown to us, unless certified by the bank on which they are drawn, will delay shipment of goods until check can be collected. Ten cents must be added to all checks to cover cost of exchange.

For the convenience of our customers, we suggest they purchase through a regular dealer in photographic goods, thus saving time and express charges.

Century Camera Division  
Eastman Kodak Company  
Rochester New York

CENTURY  
CAMERAS